

*IPM Coordinating Committee Meeting  
30 November 2018, Maricopa, AZ*

# Arizona Pest Management Center



- 1. Recognition**
- 2. Resources**
- 3. Values**



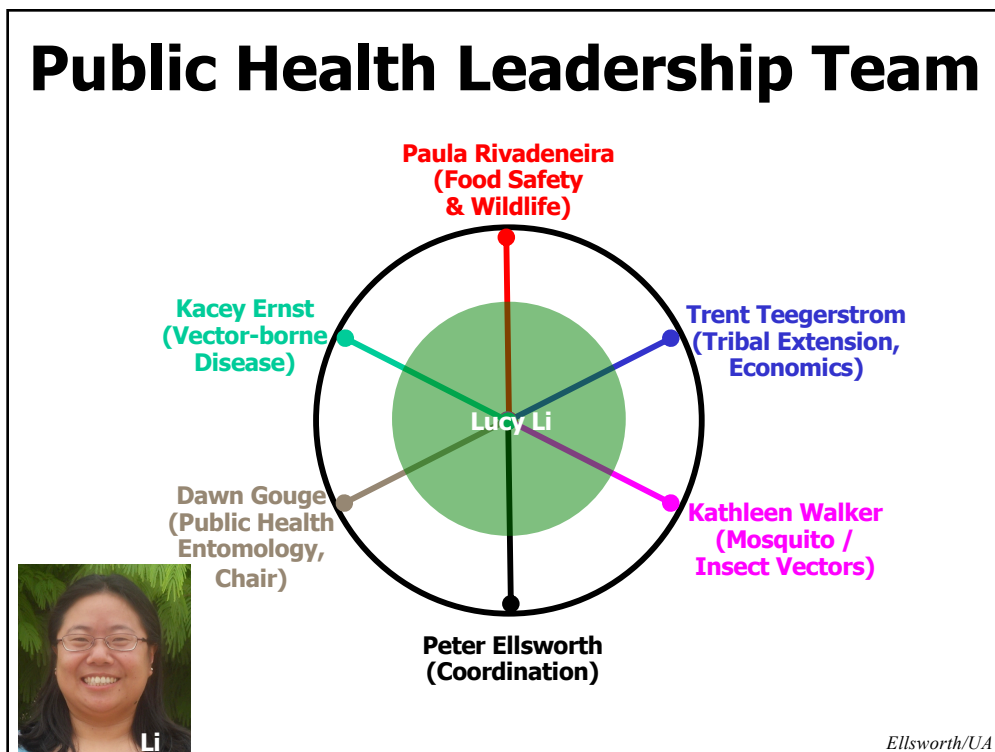
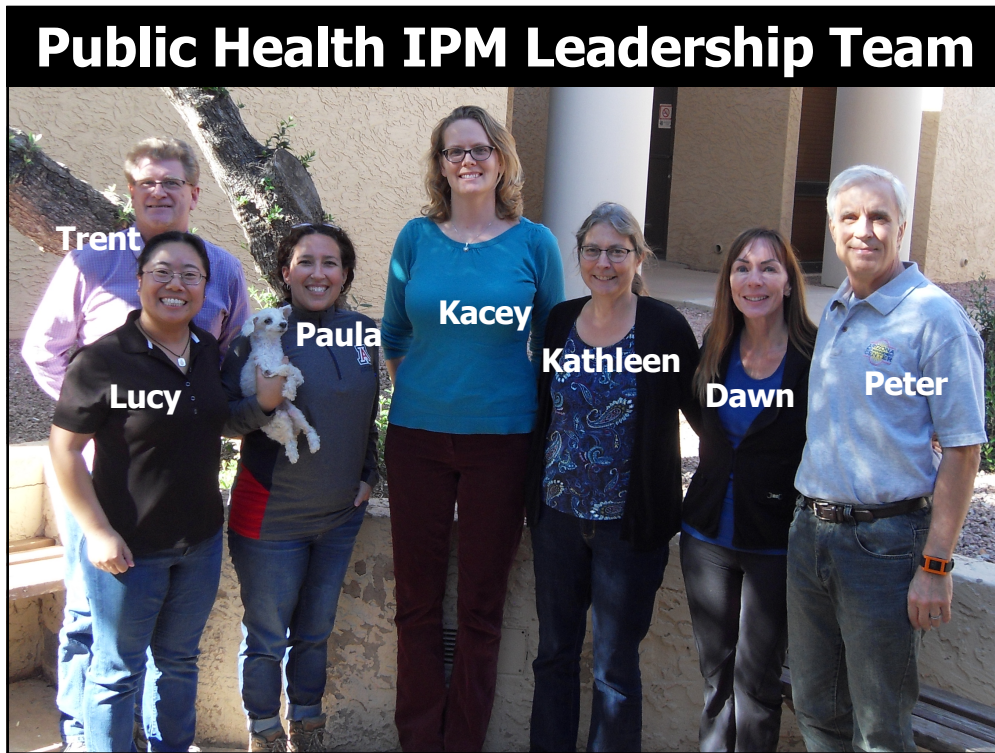
*Ellsworth/UA*



## Agronomic Crops IPM



- **Naomi Pier, Assistant in Extension**
  - 11/5/18
- **Example Support**
  - 50% EIP
  - 10% Crop Pest Losses & Impact Assessment Signature Program (Western IPM Center)
  - 20% USDA-BRAG (Ellsworth w/ NCSU)
  - 10% Cotton Incorporated (Ellsworth)
  - 10% cotton industry support (Ellsworth)





**Shaku**

**Science of Natural World**


**Science City**  
64th Festival of Books  
The University of Arizona

**Recognizing Achievement**

**Promoted to Associate in Extension (9/18)**

**Recognizing Achievement**

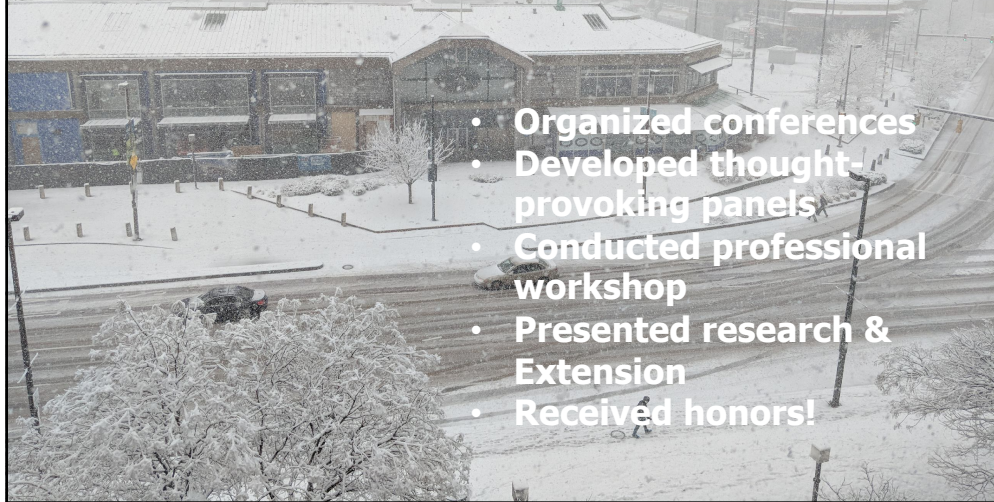
**Promoted to Entomology, Associate Specialist (7/18)**



**AI**

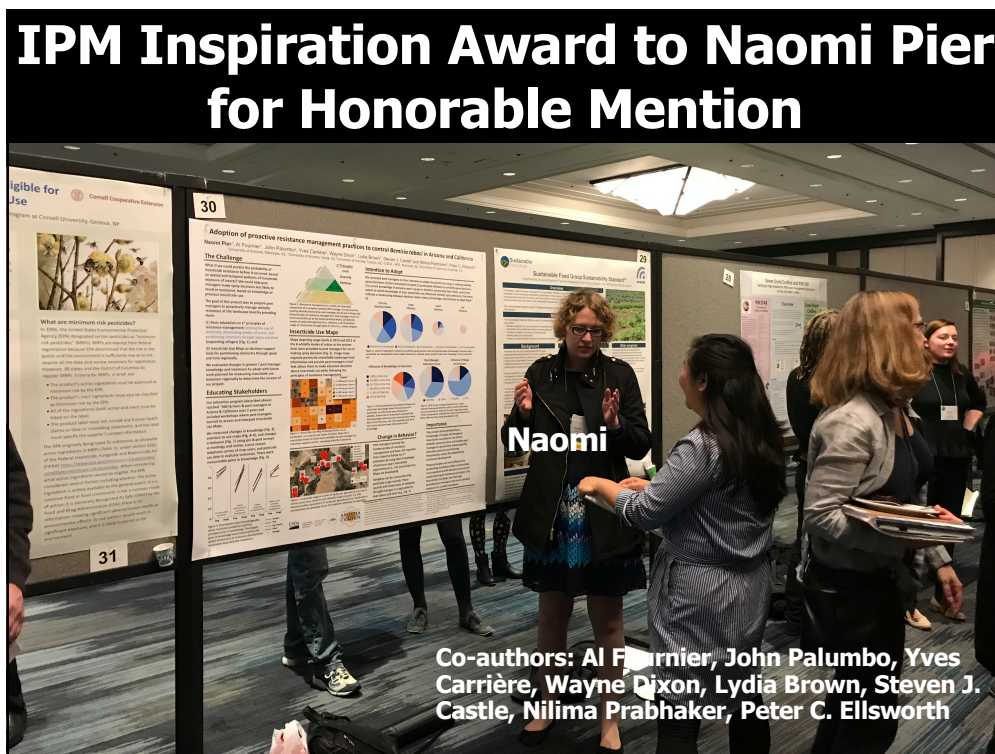
## **APMC Storms Baltimore**

**Lydia Brown, Yves Carriere, Steven J. Castle, Wayne Dixon, Peter Ellsworth, Al Fournier, George Frisvold, Dawn Gouge, Dave Kopec, Lucy Li, Shaku Nair, John Palumbo, Nilima Prabhaker, Ursula Schuch, Kai Umeda**



## **Dawn Gouge, International IPM Award of Excellence**



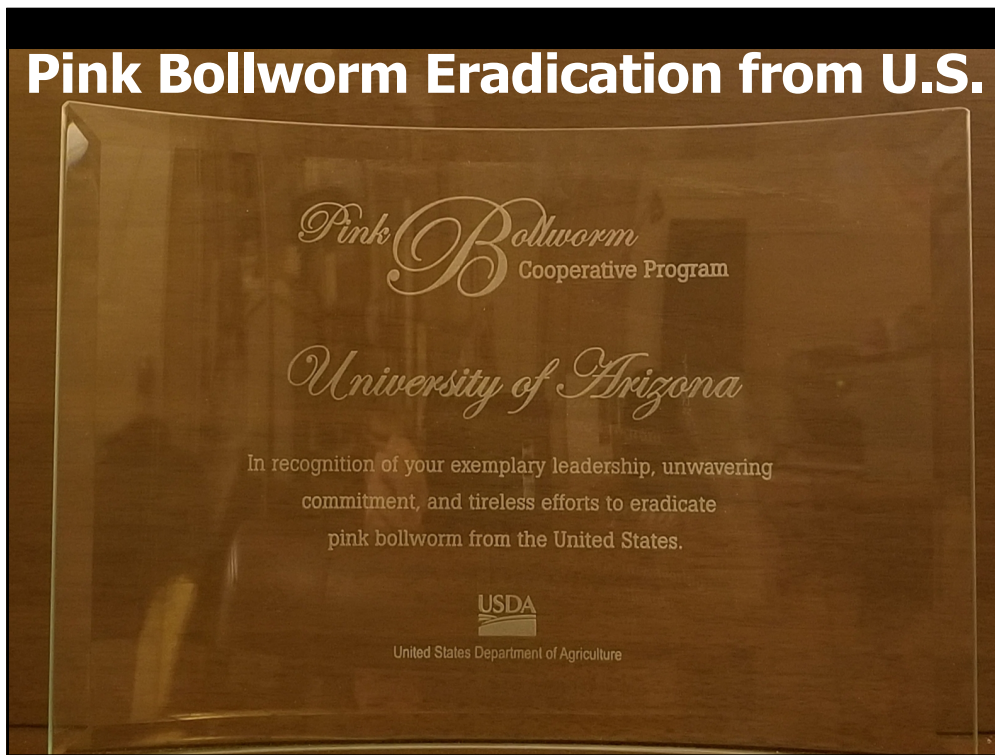


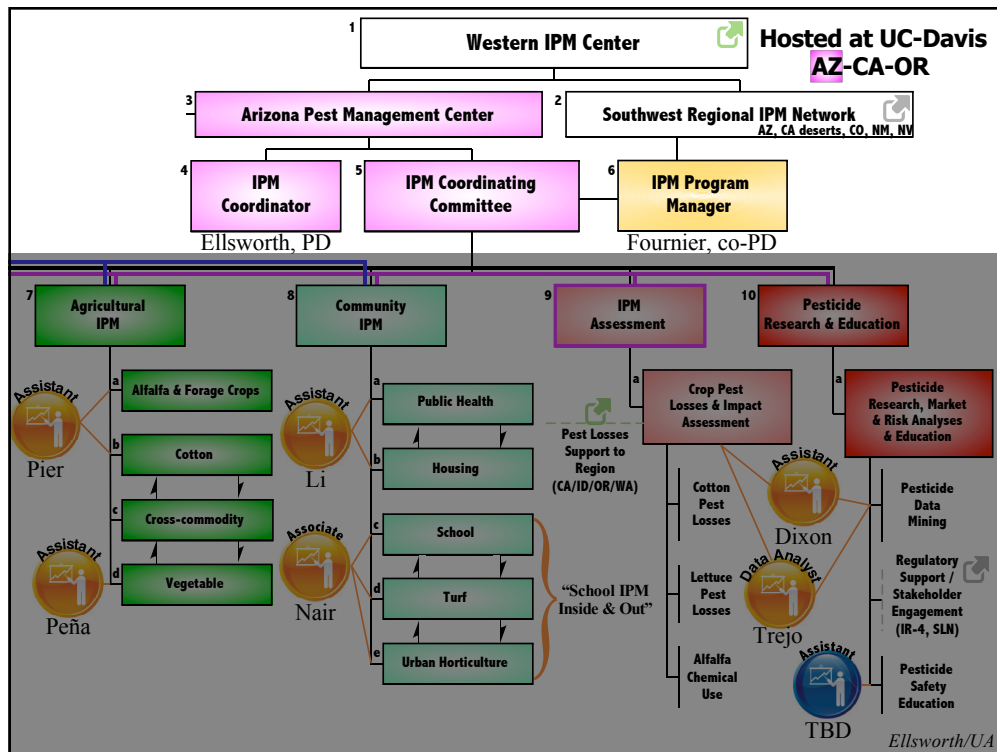
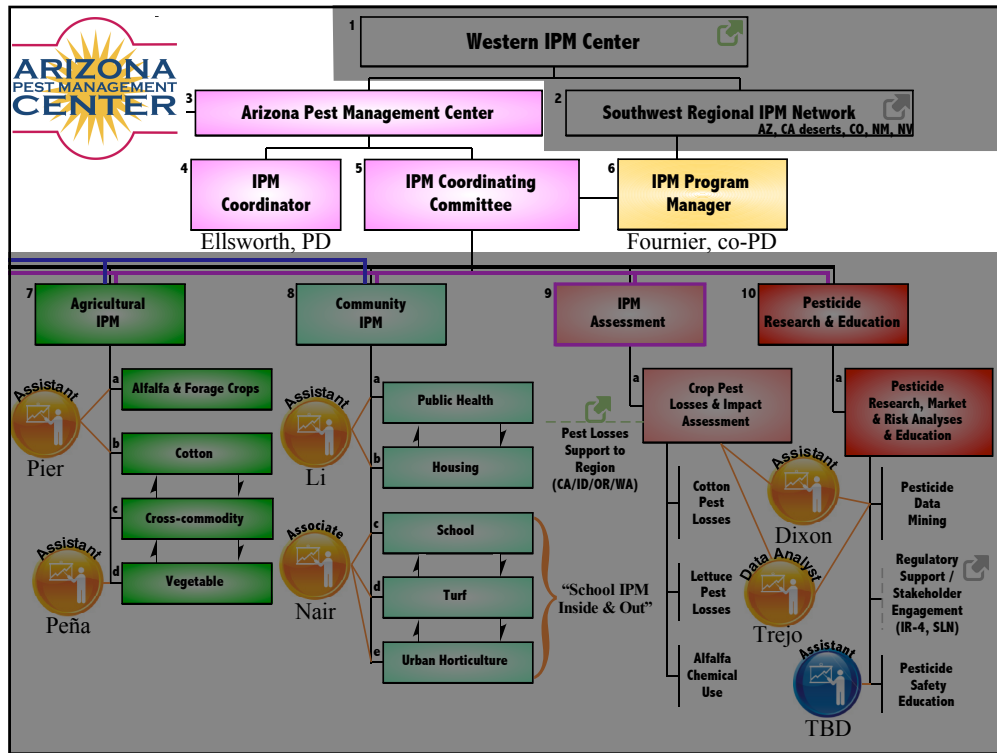


## Trip to the Hill

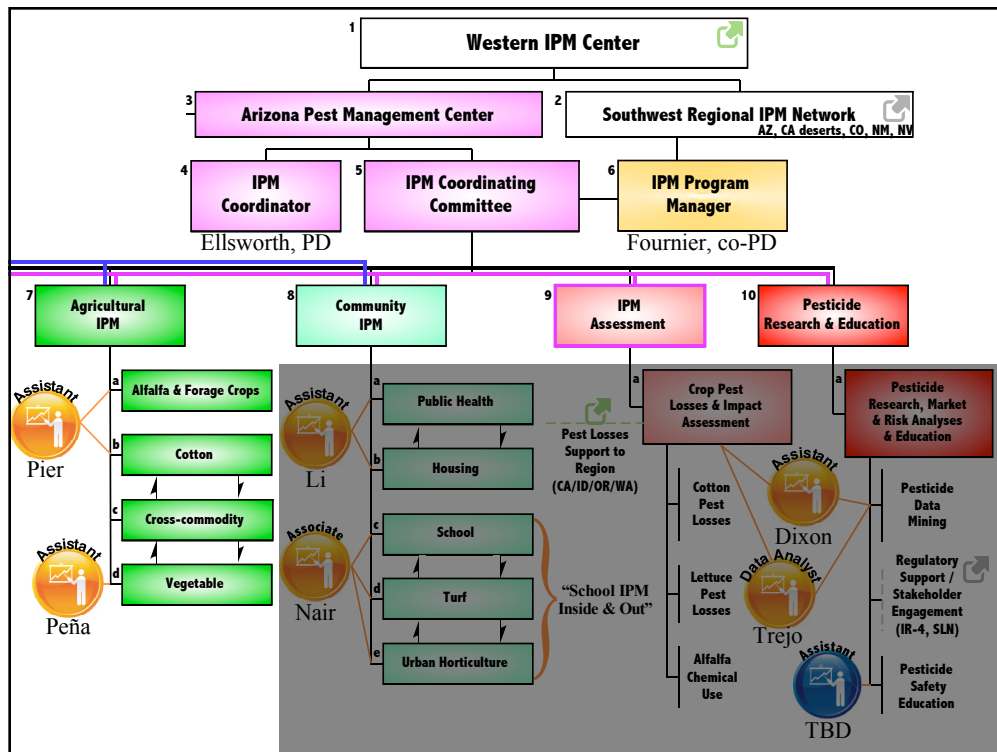
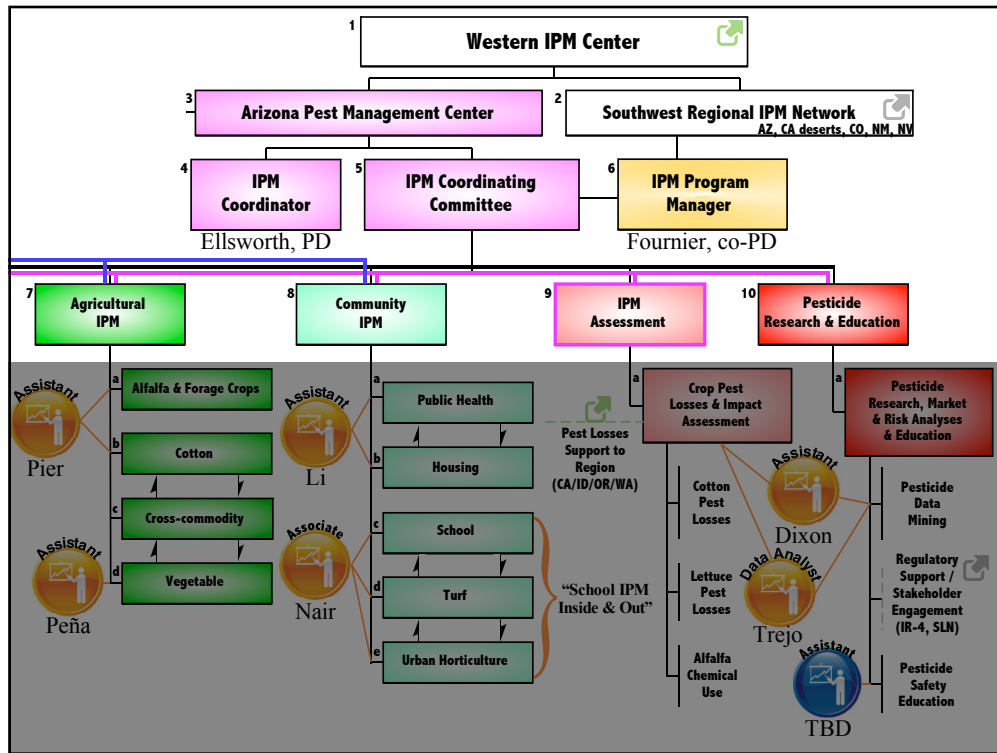
## Respirator Safety Training

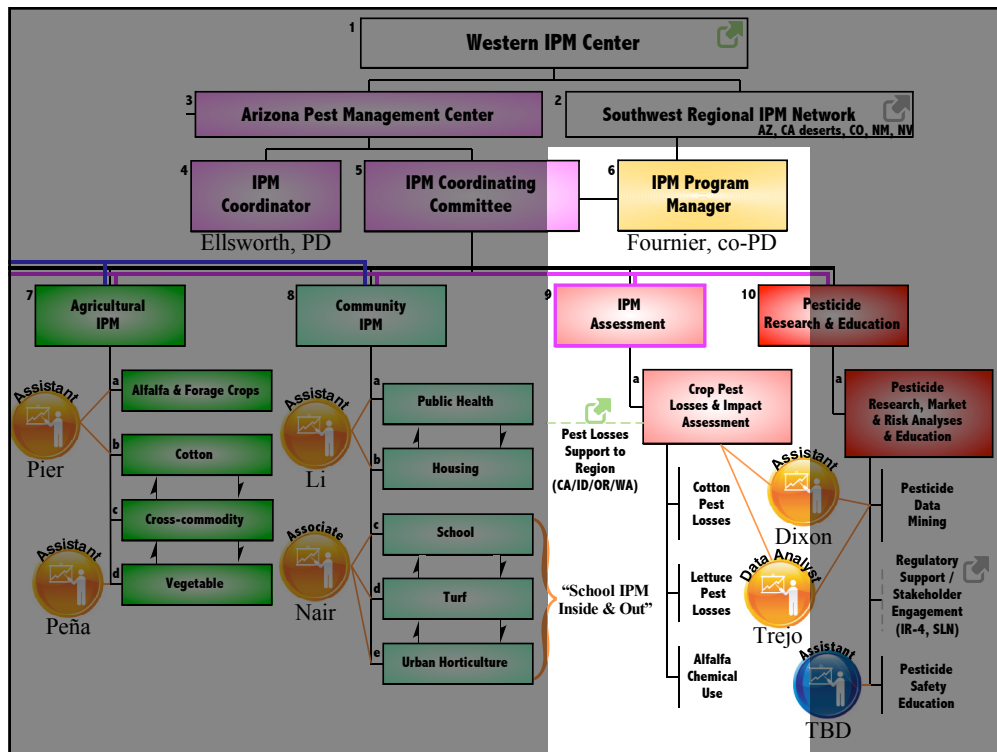
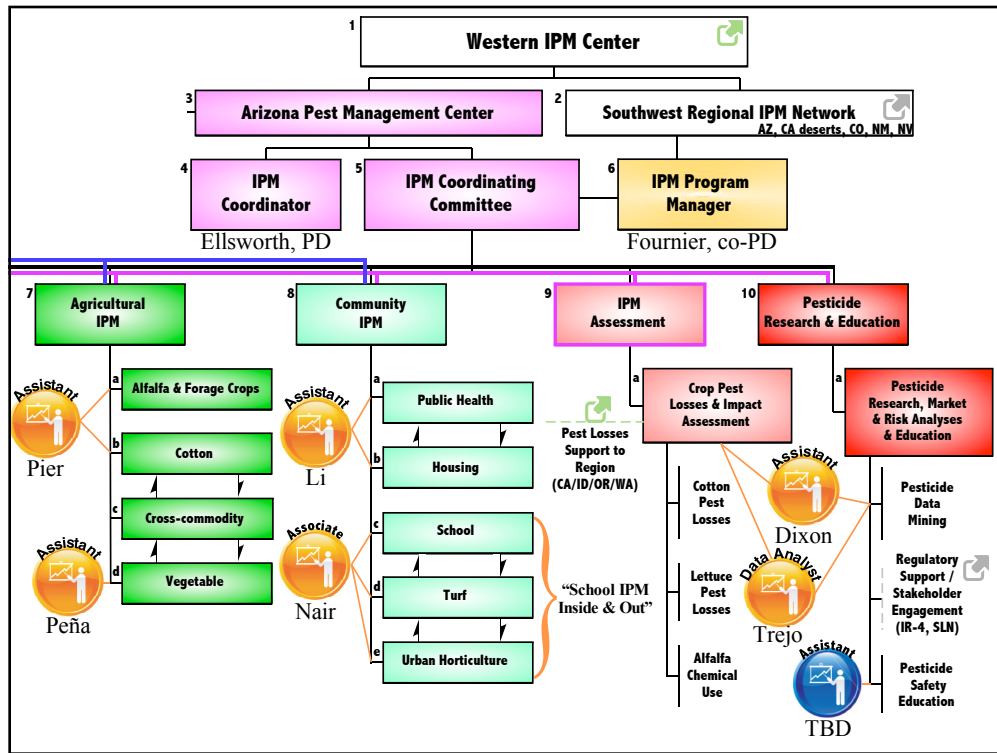


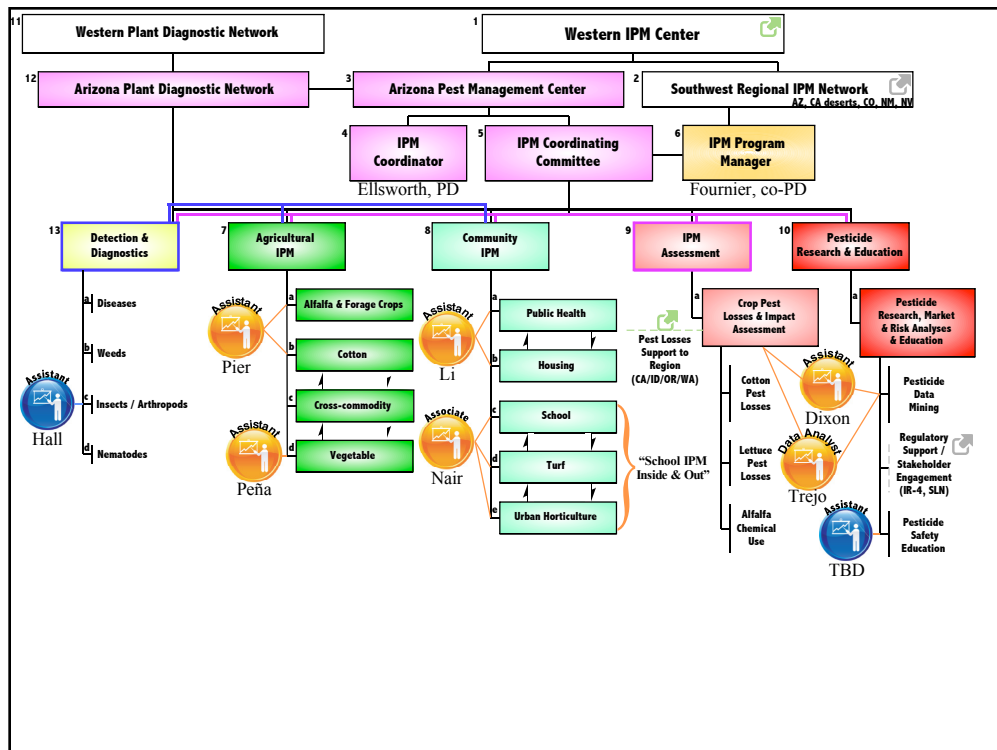
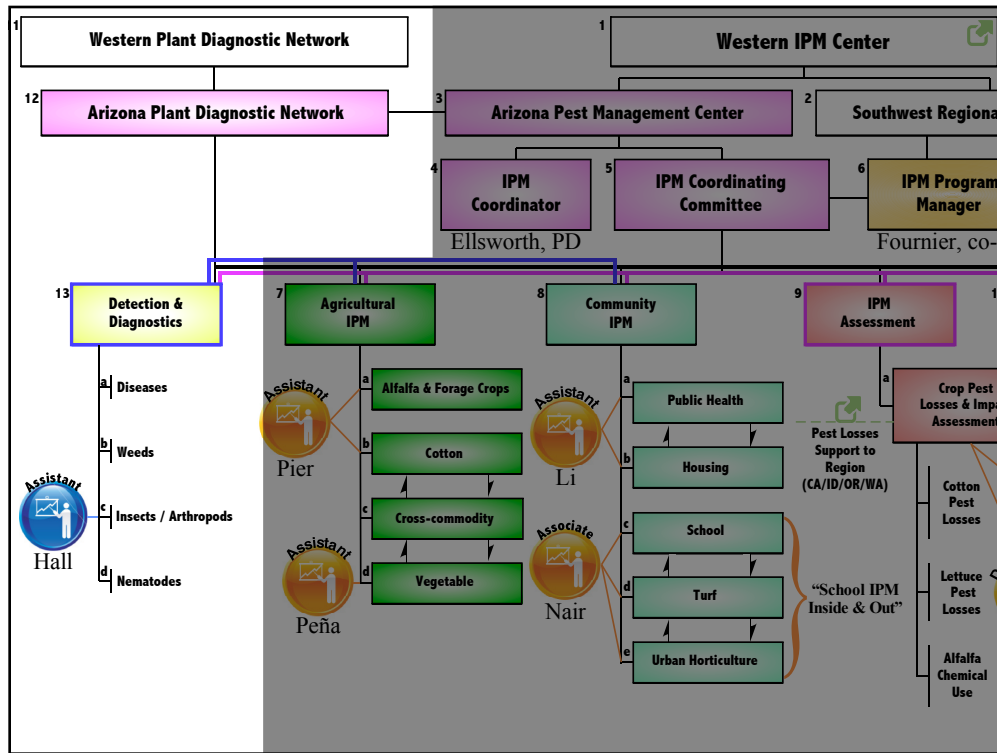


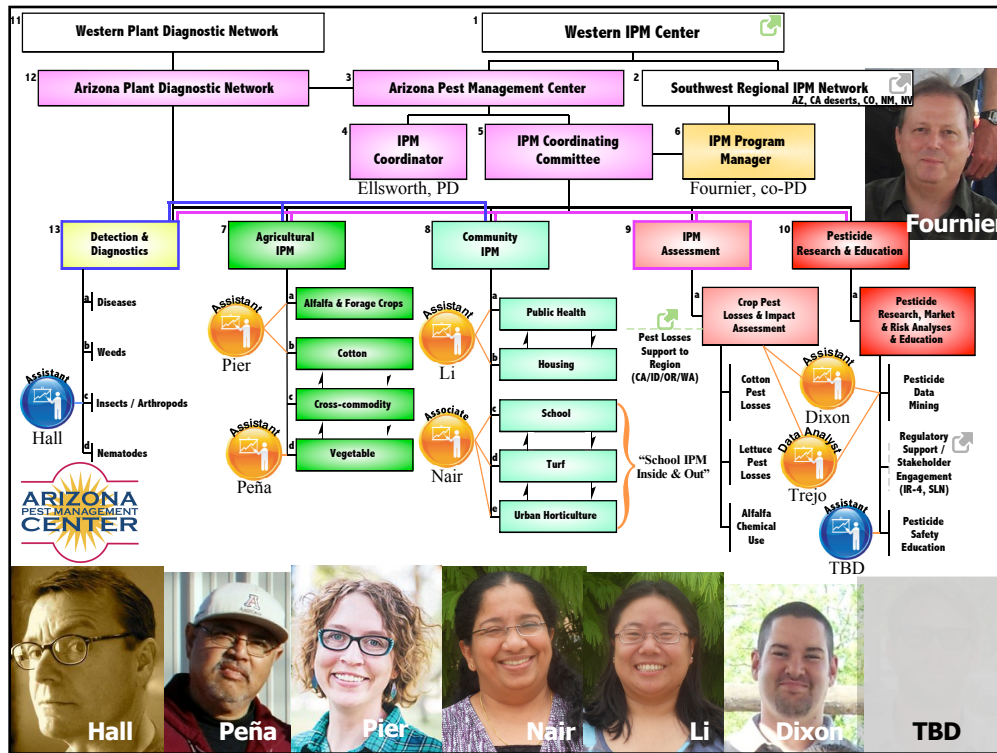








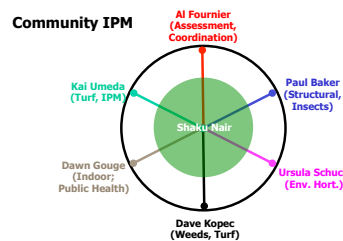




## IPM Leadership Chairs

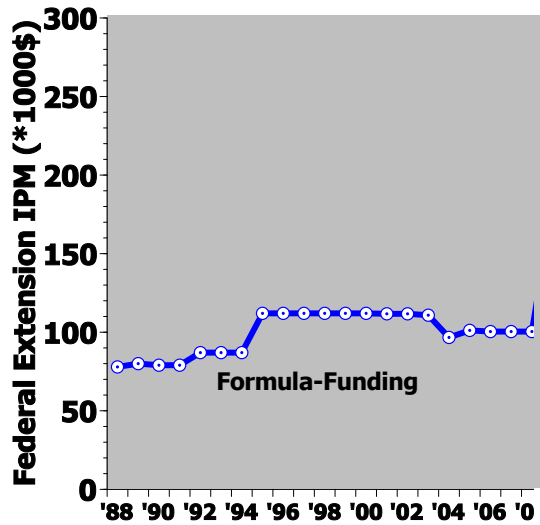
- **Vegetable IPM**
  - John Palumbo, Chair
- **Cotton / Agronomic IPM**
  - Peter Ellsworth, Chair
- **Community IPM**
  - Dawn Gouge, Chair
- **IPM Assessment**
  - AI Fournier, Chair
- **Pesticide Safety Education**
  - Peter Ellsworth, Chair
- **Insect Diagnostics**
  - Wendy Moore & Peter Ellsworth, Co-Chair
- **Public Health IPM**
  - Dawn Gouge, Chair

### IPM Leadership Teams



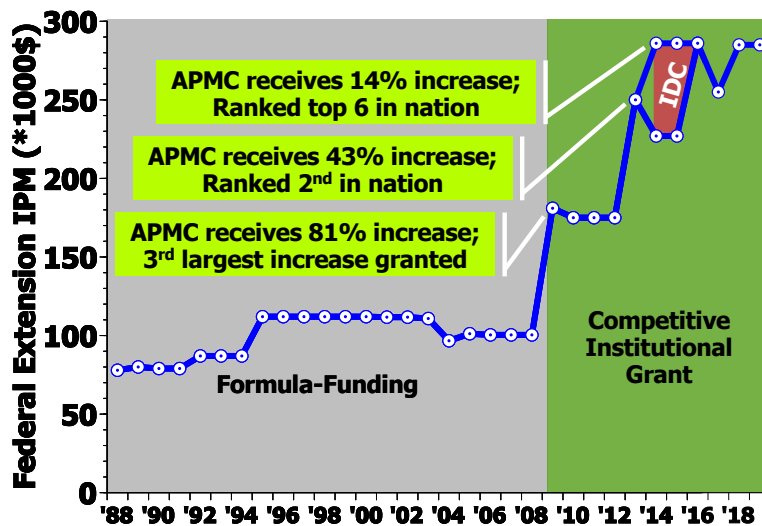
Ellsworth/UA

## Past Funding: Static & Low

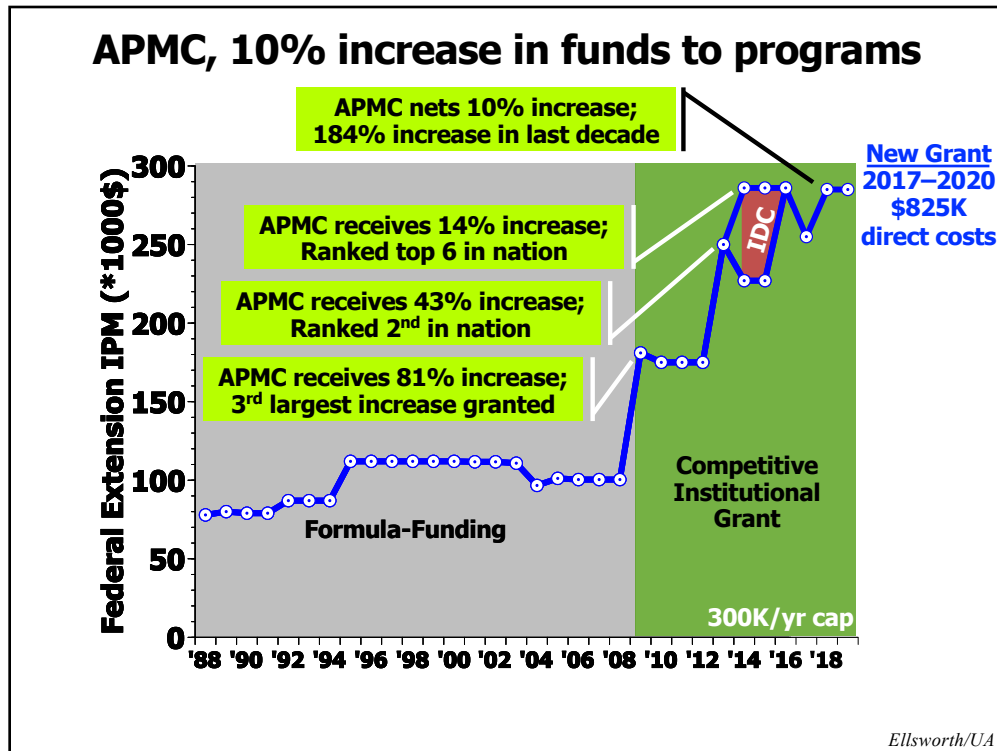



Ellsworth/UA

## UA-APMC, Top Increases!




Ellsworth/UA






## IPM Assessment





- **Wayne Dixon**
- **Example Support**
  - 50% EIP
  - 20% Crop Pest Losses & Impact Assessment Signature Program (Western IPM Center, Ellsworth)
  - 30% Arizona Specialty Crops Block Grant Program (Fournier)




## IPM Program Manager

- **Al Fournier**
  - Associate Director, APMC
  - Associate Specialist, Entomology
- **Example Support**
  - 25% EIP
  - 47% State funds (Ento/CE)
  - 10% Crop Pest Losses & Impact Assessment Signature Program (Western IPM Center, Ellsworth)
  - 18% Arizona Specialty Crops Block Grant Program (Fournier)

## Vegetable IPM


- **Marco Peña**
- **Example Support**
  - 50% EIP
  - 50% Arizona Specialty Crops Block Grant Program (Palumbo)





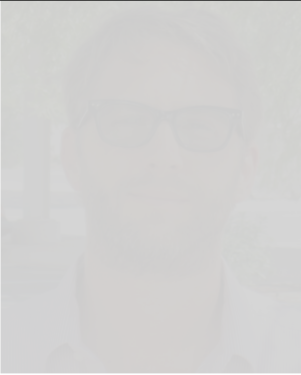
## Insect Diagnostics

- **Gene Hall**
- **Example Support**
  - 50% Cooperative Extension
  - 50% Curator, UA Insect Collection
    - Wendy Moore

## Pesticide Safety Education Program

- **To be determined**
- **Transferred to Entomology**
  - Agreement between Cooperative Extension and Arizona Department of Agriculture
- **Example Support (Programmatic)**
  - ?% Cooperative Extension
  - ?% Arizona Dept. of Agriculture





# Why EIP\* is important to AZ

- EIP enables **capacity** to do research & outreach AND:
  - capacity to **engage stakeholders** at all levels and conduct needs assessments,
  - **measure outcomes**, and
  - **maintain long-standing efforts** to measure, support, and secure impacts

\*Extension Implementation Program of USDA-NIFA = Our Institutional Grant

*Ellsworth/UA*

## Extension =

**Problem-solving, Issue-driven  
Research**


+

**Engaged Outreach**

with measured outcomes over a  
timescale sufficient to ultimately  
**change behaviors or conditions**

+ = "fully integrated with"



<p><b>Extension =</b></p> <p><b>Problem-solving, Issue-driven Research</b></p> <p><b>+</b></p> <p><b>Engaged Outreach</b></p> <p>with measured outcomes over a timescale sufficient to ultimately <b>change behaviors or conditions</b></p> <p><small>+ = "fully integrated with"</small></p>	 <ul style="list-style-type: none"><li>• <b>Identify problem by engaging stakeholders</b></li><li>• <b>Develop solutions through applied research &amp; education</b></li><li>• <b>Assess &amp; measure impacts and changes in client behavior</b></li><li>• <b>Develop feedback &amp; adjust research &amp; education</b></li></ul> <p><small>Ellsworth/UA</small></p>
---	---