

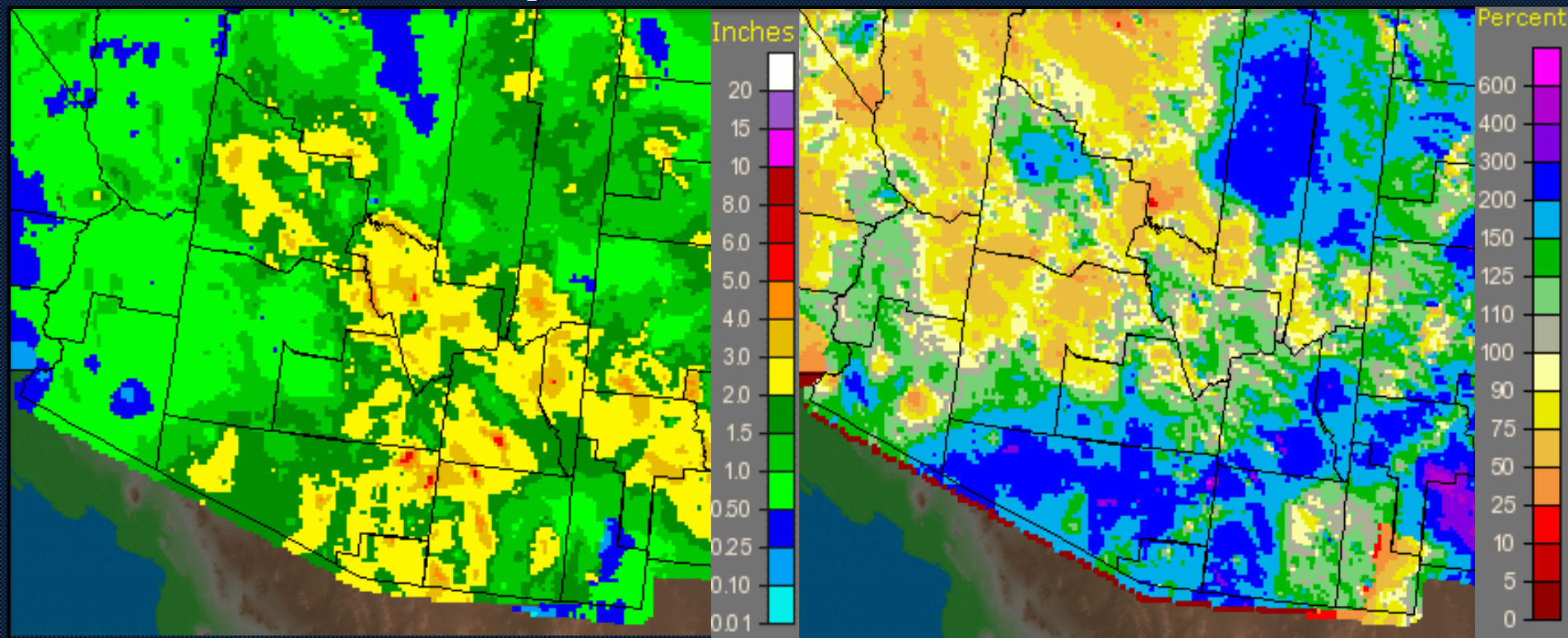
# Temperature & Precipitation Outlooks



## January

### Observed Precipitation

### Percent of Normal

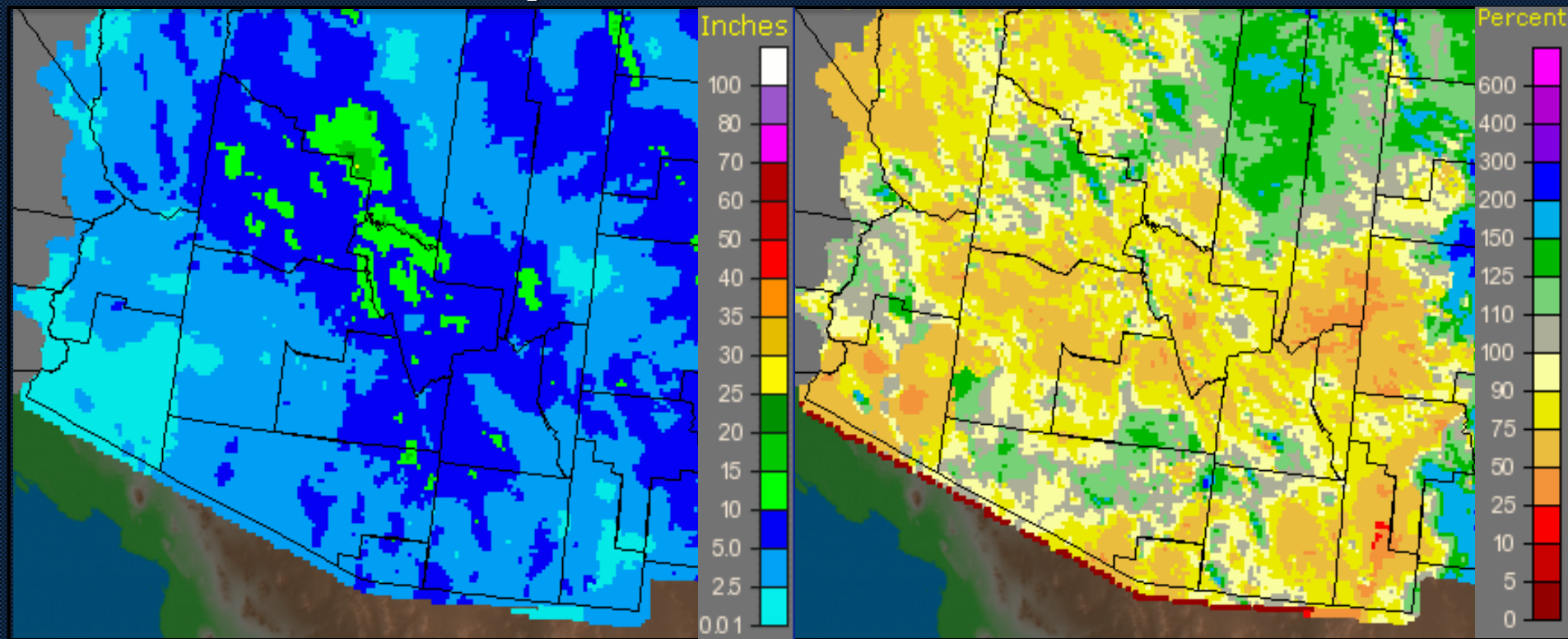


- Several rainy spells
- Much of southern AZ saw at or above-normal precipitation
- 1-2" valley locations, upwards of 3-4+" higher elevations

## February-Now

### Observed Precipitation

### Percent of Normal



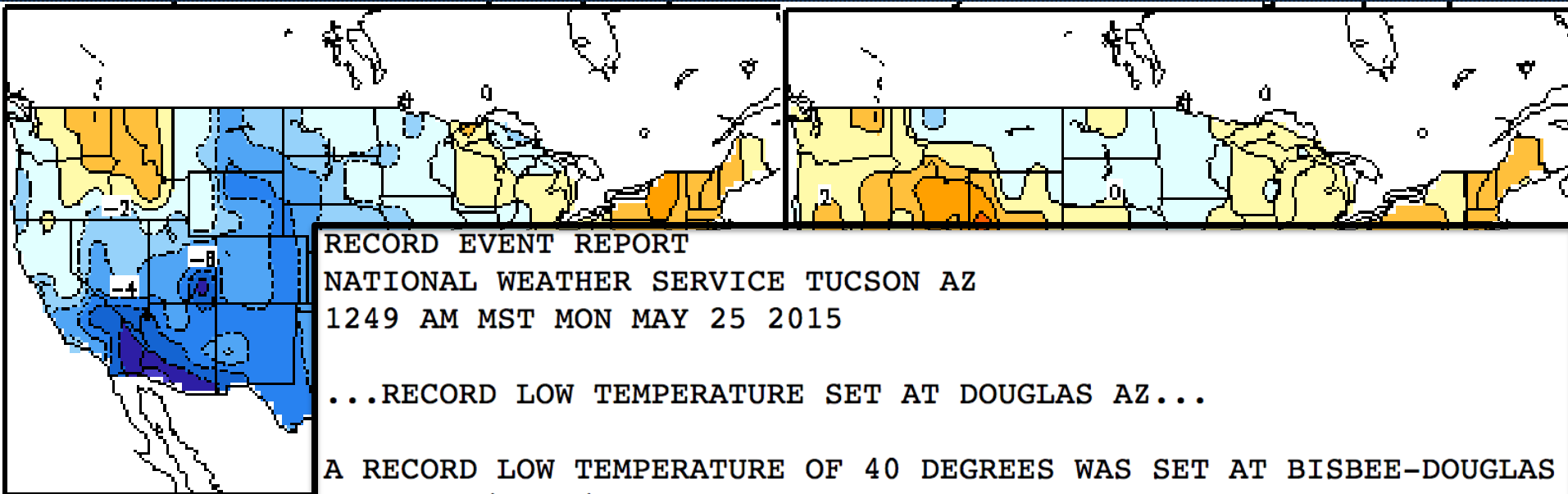
- Dried out during this period. Some above-normal precipitation during March
- Many locations in Cochise County 40-75% of normal precipitation

The year so far...

# Temperature departures past 30 days

Max T

Min T

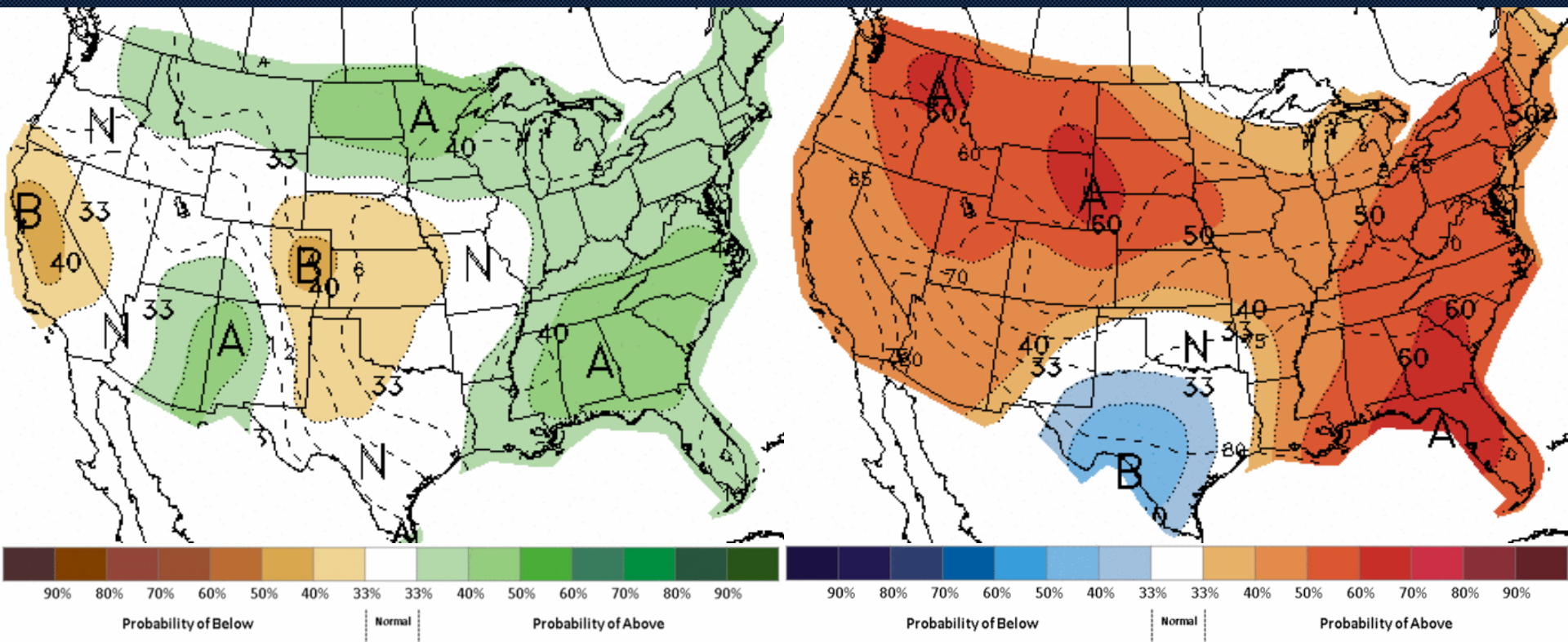


- Much below normal high temperatures across much of Intermountain West over last month (-8 to -12 F departures!)
- Lows have been a bit warmer. Still below climatic means



# Short-Term Precipitation Outlook

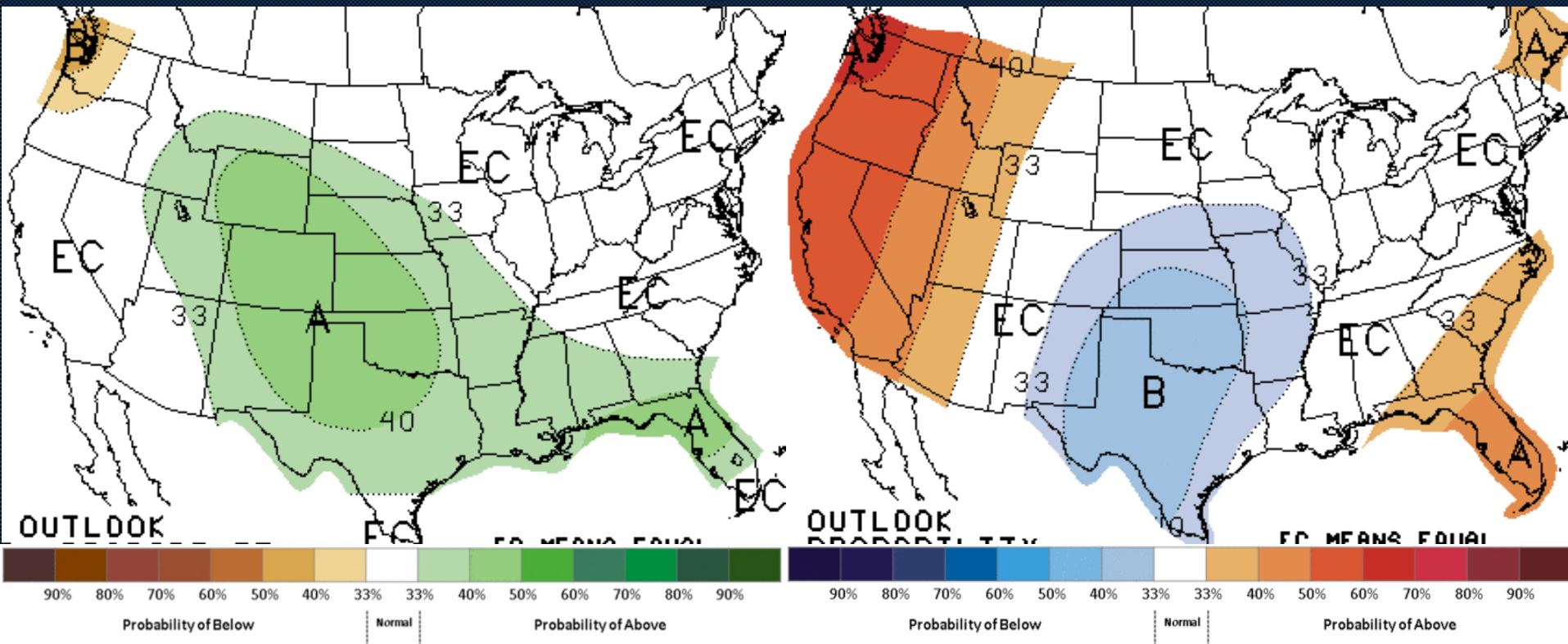
## Through the 1<sup>st</sup> week of June



- Good confidence in above-normal temperatures continuing/developing during this period
- Chances of above-normal precipitation
  - Note: "Normal" 1<sup>st</sup> half of June precip ~0.10"



## June, July, and August

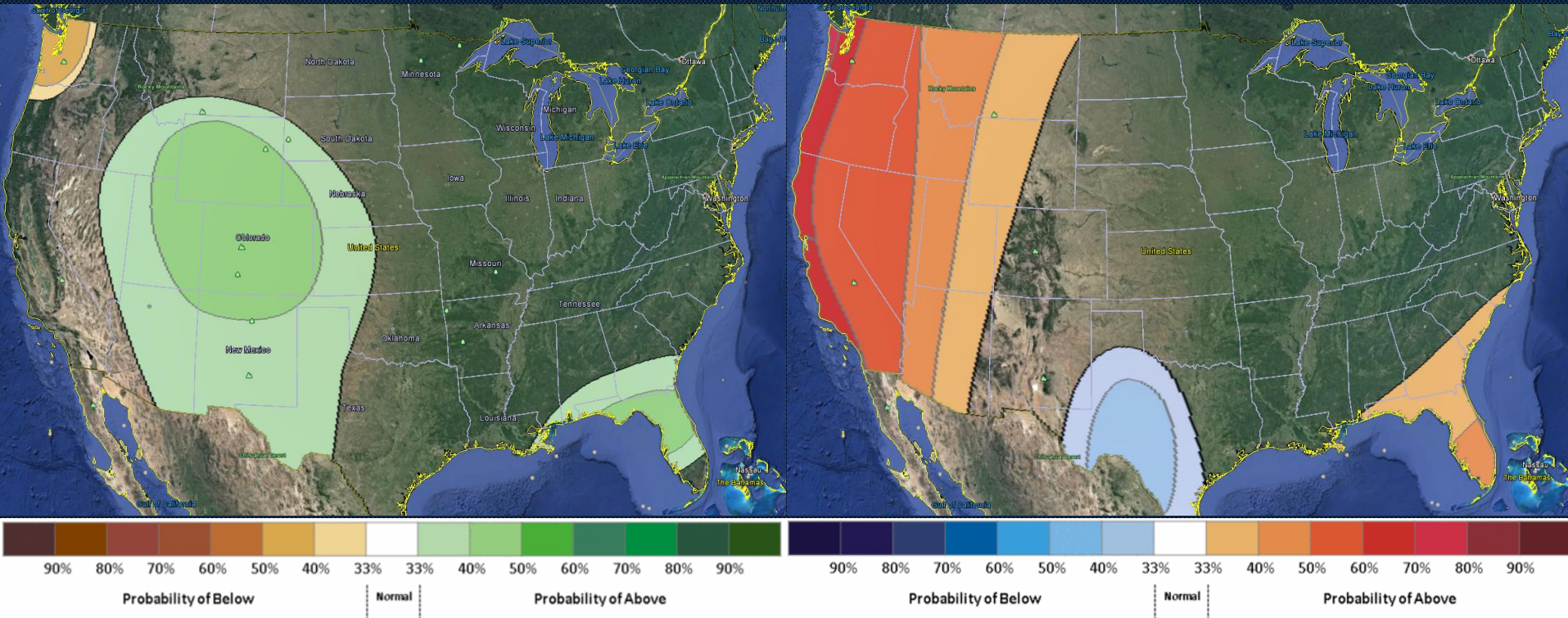


- Tough to discern either way for an above or below-normal Monsoon in terms of precipitation
- Latest indications are for near to slightly above-normal temperatures



# Previous Long-Term Outlook

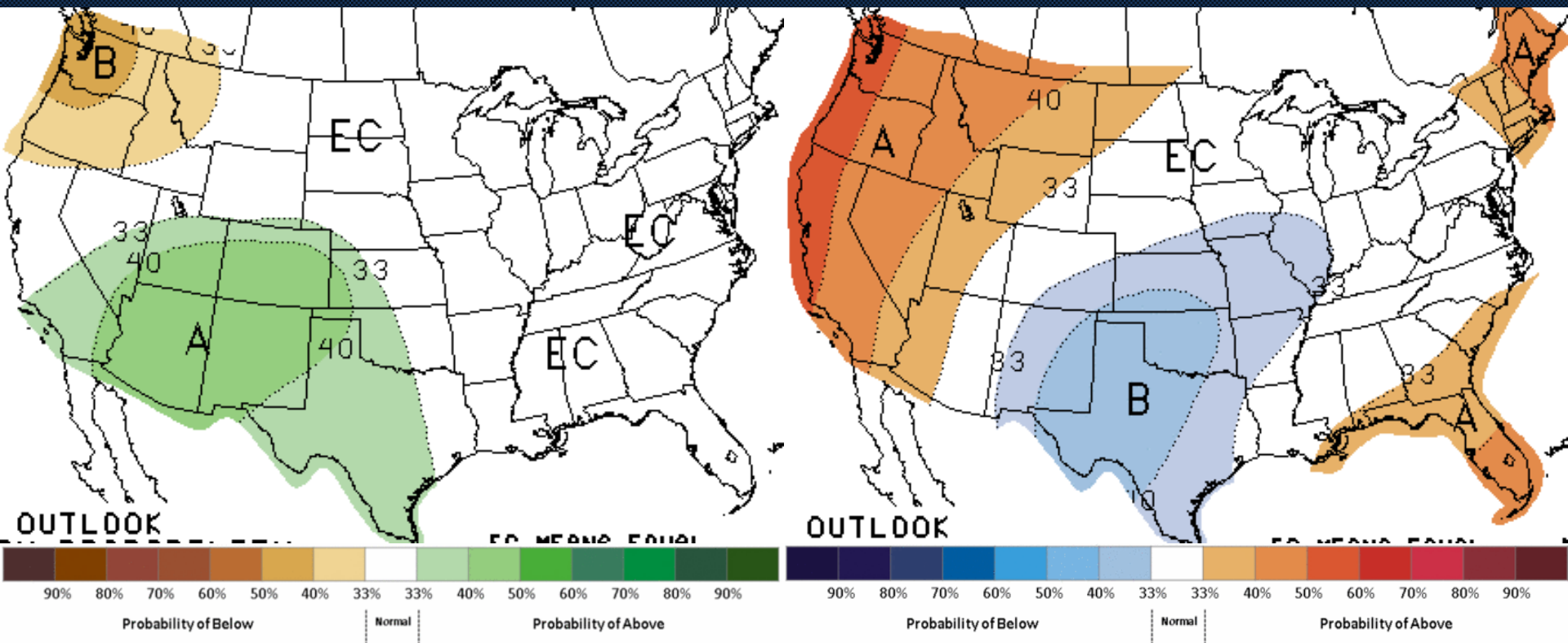
## June, July, and August



- Looking at previous outlooks can be a gauge of forecast confidence
- Above-normal precipitation region has been shifted eastward in most recent outlook
- Very little change to temperature outlook

# Longer-Term Outlook

## September, October, November

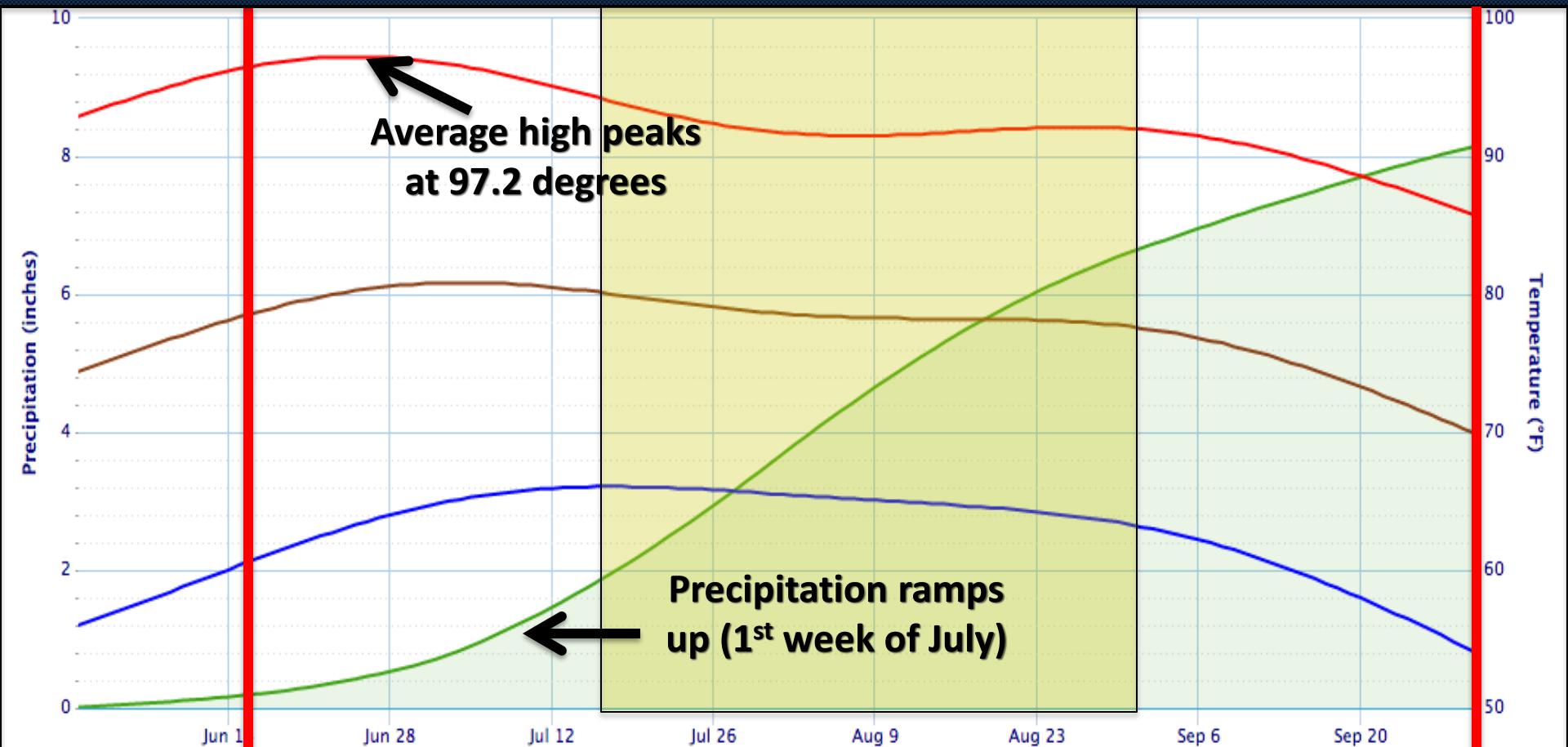


- Continued at or slightly above normal temperatures during this period, with very little change to previous 3 month distribution
- Above-normal precipitation region slides west somewhat
  - Tail-end of Monsoon Season and right after *can* still be an active precipitation period



# A 'typical' Monsoon Season

## Douglas, AZ



Monsoon Season  
officially  
begins

Monsoon  
Season ends



# Take home points

- **Signal for above-normal precipitation during roughly the first half of June**
  - Note: 'normal' precipitation during this period is very low, ~0.10"
- **Above-normal temperatures likely as well**
- **June, July, August period forecast more uncertain**
  - El Nino years tend to be drier than normal (weak correlation)
  - CPC outlook calls for near-normal precipitation, although has trended drier from previous outlook
  - Temperatures at or slightly above-normal
- **Continuation of at or above normal temperatures during September, October, November**
- **Possibly a westward expansion of above-normal precipitation area**