

Gardening Presentation
January 3, 7:00 p.m.
'Tool Care'

Winter is a good time to talk about garden tools and how to maintain them. Bring your favorite or most unusual garden tool and let the others guess its function. Ruth Anne Neff will explain the proper care of our tools. If treated well, our tools should last us a lifetime. Ruth Anne has been a Horticulture Technician for the University of Arizona Cooperative Extension in Graham County since 1999. She is a Certified Master Gardener and has operated a yard and gardening service in the area for 11 years..

Persons with a disability may request a reasonable accommodation, such as a sign language interpreter, by contacting U of A Graham County Cooperative Extension at 520-428-2611. Requests should be made as early as possible to allow time to arrange the accommodation.

ARIZONA COOPERATIVE EXTENSION
U.S. DEPARTMENT OF AGRICULTURE
THE UNIVERSITY OF ARIZONA
TUCSON, ARIZONA 85721

OFFICIAL BUSINESS
PENALTY FOR PRIVATE USE, \$300

POSTAGE & FEES PAID
USDA
PERMIT NO. G-268

Cooperative Extension The University of Arizona • College of Agriculture & Life Sciences •

GRAHAM COUNTY GARDENING

Graham County • 2100 South Bowie Ave • P.O. Box 127 • Solomon, AZ. 85551 • (520) 428-2611 • Fax 428-7023

January 2002

****** Annual Survey ******

It's time once again to ask you to respond if you wish to continue receiving this newsletter. Please do one of the following by JANUARY 18, 2002:

- A. Call our office, 428-2611**
- B. E-mail Sue at: suzanne@ag.arizona.edu**
- C. E-mail Ruth Anne at: ruthanne@ag.arizona.edu**

Please check your name and address and let us know of any corrections at this time. In 2002 this newsletter will be available via e-mail. If you wish to receive your newsletter at your e-mail address please let us know.

Don't miss the 2002 newsletters!

Pruning Workshop

The public is invited to attend a Pruning Workshop on Saturday, January 26, 2002, at 10:00 a.m.. It will be held at the Safford City/Graham County Public Library, Phelps Dodge Room. Three guest

speakers will explain pruning techniques for ornamental plants, fruit and shade trees, and grapevines. Refreshments will be served. Afterwards, we will move to the home of Arden Palmer, in Thatcher, for hands-on pruning demonstrations.

Upcoming Events

Jan. 3	Gardening Presentation, Tool Care, 7:00 p.m., Master Gardener Business Meeting, 5:30 p.m., Safford City/Graham County Public Library, PD Room
Jan.15	Gardening and Landscaping Class begins, Course #1816, Tuesday nights, 6:00 p.m. - 9:00 p.m., EAC
Jan. 26	Pruning Workshop, 10:00 a.m., Safford City/Graham County Public Library, PD Room
Feb. 1	Volunteer Recognition Dinner
Feb. 7	Gardening Presentation, TBA, 7:00 p.m., Master Gardener Business Meeting, 5:30 p.m., Safford City/Graham County Public Library, PD Room
Feb. 21-22	High on the Desert Conference, Windmere Inn, Sierra Vista
Feb. 22-23	Southwest Youth Gardening Conference, Metro Tech High School, Phoenix

Edited by: Sue Martin
Ruth Anne Neff

Randall Norton
Agriculture Agent

Plant of the Month

In the January Garden:

- c **Continue to add compost and manure to garden beds as they become vacant.**
- C **Mulch to keep winter weeds down and to conserve moisture.**
- C **Plant head lettuce through the 15th of the month.**
- C **Plant asparagus, beets, cabbage (plants), carrots, chard, kale, leaf lettuce, green bunching onions, peas, and spinach all month.**
- C **Tomato seeds may be started indoors after January 10th.**
- C **Set out perennials and cool season annuals, such as alyssum, calendula, chrysanthemums, dianthus, daisies, larkspur, pansies, snapdragons, stocks, and violas.**
- C **Start to plant bare rooted trees, roses, grapes and cane berries later in the month.**
- C **Fertilize citrus now. Cover when temperatures are predicted to be in the mid 20's or lower.**
- C **Begin pruning deciduous trees and shrubs. Come to the Pruning Demonstration at the Safford Library, PD Room, on January 26.**
- C **Between rains, irrigate deep rooted plants, such as trees, occasionally, but thoroughly. Once a month is usually sufficient for trees and many shrubs. Shallow-rooted plants require water more often (every 2-3 weeks).**
- C **Don't forget that dormant bermudagrass lawns still need to be watered once a month.**

Chaste Tree

Vitex agnus castus (VI-tex AG-nus CAS-tus)

A deciduous shrub or small tree, Chaste tree is a very adaptable plant. With irrigation it will grow fairly quickly to a 20' tall patio tree with a spread equal to its height. Without irrigation it is more likely to remain a shrub no taller than 6'. The dark green aromatic leaves are composed of 5-7 leaflets arranged around a center point. The trunk of the tree has attractive stringy gray bark.

In early summer, numerous showy 7" flower spikes appear above the foliage. The fragrant flowers are usually lavender blue and attract butterflies. Variety 'Rosea' has pink flowers and 'Alba' has white flowers. A Chaste tree may bloom off and on through the fall. The flowers are followed by tiny, hard, round capsules.

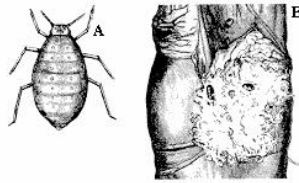
The tree requires summer heat for best development and bloom but is hardy to about 10 degrees F.



Plant Chaste tree anytime of year from pots. It will grow in either part or full sun and will take reflected sun. It tolerates a wide variety of soils. The tree is drought tolerant, doing nicely on just occasional watering (monthly) but will accept moderate water. It

Bug of the Month

Woolly Apple Aphid



Description: Adult woolly aphids are normally wingless and are dark brown to purple in color. The tiny insects are about 1.8 mm (1/16") long and cover themselves with long white woolly-looking filaments with a waxy coating. The immature nymphs are reddish brown and range in size from 0.6 mm to 1.3 mm (less than 1/16"). They develop a bluish-white waxy covering.

Damage/Benefits: Woolly aphids are sucking insects and feed on bark and roots, usually of apple trees. They are very seldom found on leaves as with other species of aphids. Colonies may develop underground and cause galls on the roots. These may go unnoticed but cause yellowing of the leaves and stunting of growth. Young trees may even be killed.

Life cycle: Female aphids give birth to live nymphs in the spring. These young nymphs are active crawlers and can move from the roots to above ground stems. The crawlers can also be carried by the wind to nearby trees. As the nymphs reach maturity they become less mobile. As adults, the female aphids continue to reproduce asexually through the spring and summer. The aphids usually overwinter underground as nymphs but nymphs and adults may survive a mild winter hidden in crevices of the bark.

Control: There is a small parasitic wasp that parasitizes the aphids. Unfortunately, it is susceptible to insecticides, especially pyrethroids, so does not usually survive in orchards where insecticides are routinely used. Ladybugs and their larvae, lacewing larvae, and hoverfly larvae also prey on the aphids.

Chemical control of root infestations is not possible. Insecticides are most effective when applied to the active crawlers as they make their way up the tree in late spring. Because of the woolly, waxy covering, high volumes of insecticide are needed to get thorough coverage. If still present after the initial treatment, a second application two weeks later may be necessary. Insecticidal soap or diazinon may be all that is needed for the home gardener. Other effective insecticides

include Cygon, Thiodan, Lorsban, and PennCap-M. They can also be controlled by pruning off infected branches or physically removing them.

Salt Tolerant Plants

This month we will cover some shrubs that have exhibited tolerance to salty soil. Again, plants native to the southwest are always a good choice because they have adapted to survive in our salty soil.

Salt Tolerant Shrubs for the Gila Valley

Artemisia spp. - Wormwood, Sagebrush
Atriplex spp. - Saltbushes
Bougainvillea spectabilis - Bougainvillea
Buxus microphylla - Japanese Boxwood
Caesalpinia pulcherrima - Red Bird of Paradise
Callistemon spp. - Bottlebrushes
Caragana arborescens - Siberian Pea Shrub
Cistus spp. - Rockroses
Cordia boissieri - Texas Olive
Cotoneaster divaricatus - Spreading Cotoneaster
Dalea spp. - Daleas, Indigo Bush
Elaeagnus spp. - Silverberry
Ephedra spp. - Mormon teas
Euonymus japonica - Evergreen Euonymus
Hydrangea spp. - Hydrangeas
Ilex vomitoria - Yaupon
Juniperus spp. - Junipers
Lantana camara - Lantana
Leucophyllum frutescens - Texas Ranger
Mahonia spp. - Grape Hollies
Nerium oleander - Oleander
Pittosporum tobira - Pittosporum
Plumeria rubra - Plumeria, Frangipani
Potentilla spp. - Cinquefoils
Pyracantha spp. - Pyracanthas
Rhamnus cathartica - California Coffeeberry
Raphiolepis indica - Indian Hawthorne
Rosa spp. - Roses, shrub types, e.g. Rosa rugosa
Rosmarinus officinalis - Rosemary
Symphoricarpos albus - Snowberry
Syringa spp. - Lilacs
Tecomaria capensis - Cape Honeysuckle
Thevetia peruviana - Yellow Oleander

If your favorite plant is not salt tolerant and struggles in our soil and water, one option is to plant it in a pot. Use potting soil rather than garden soil. Many plants that are sensitive to salt will do well if grown this way.

Next month we will cover some perennials that are tolerant of salty soils.