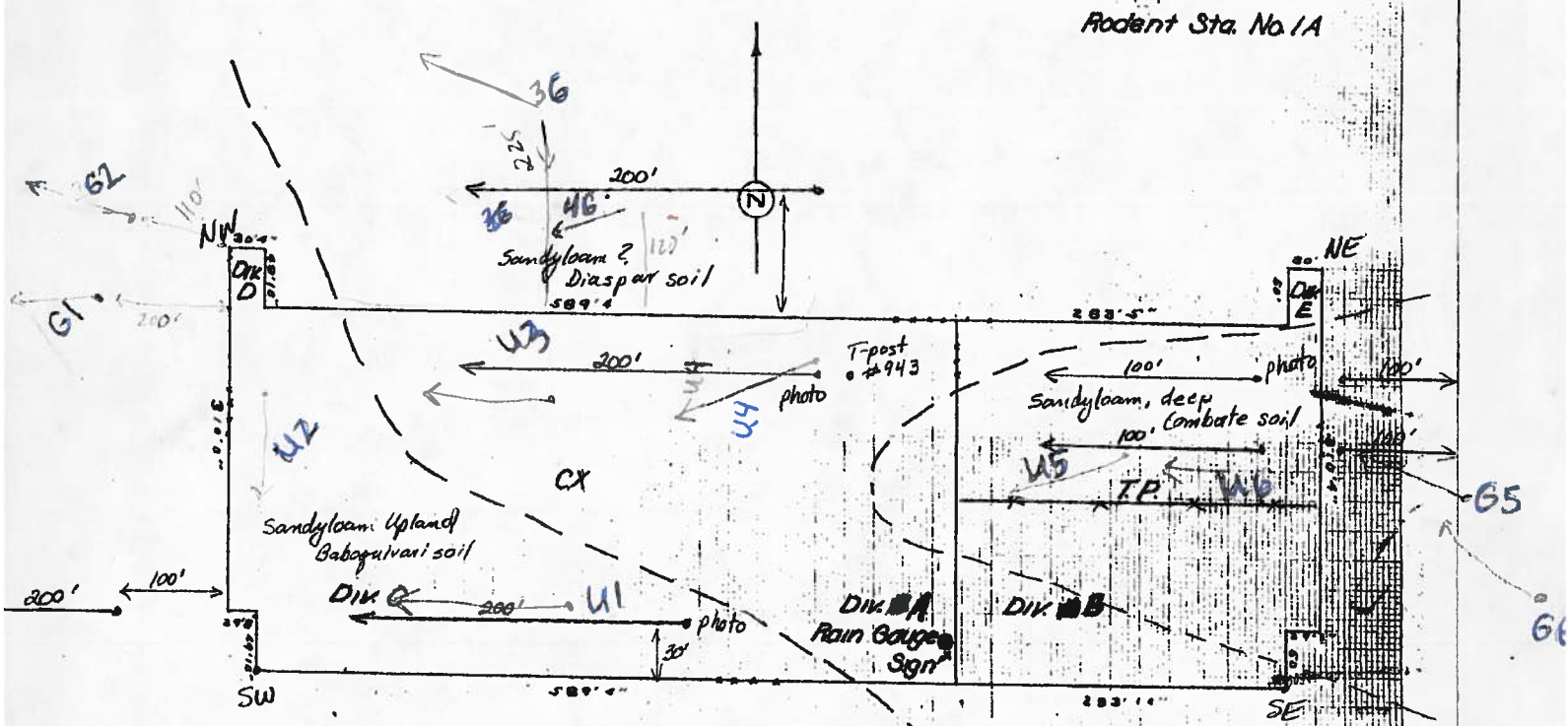


Rodent Sta. No. 1A

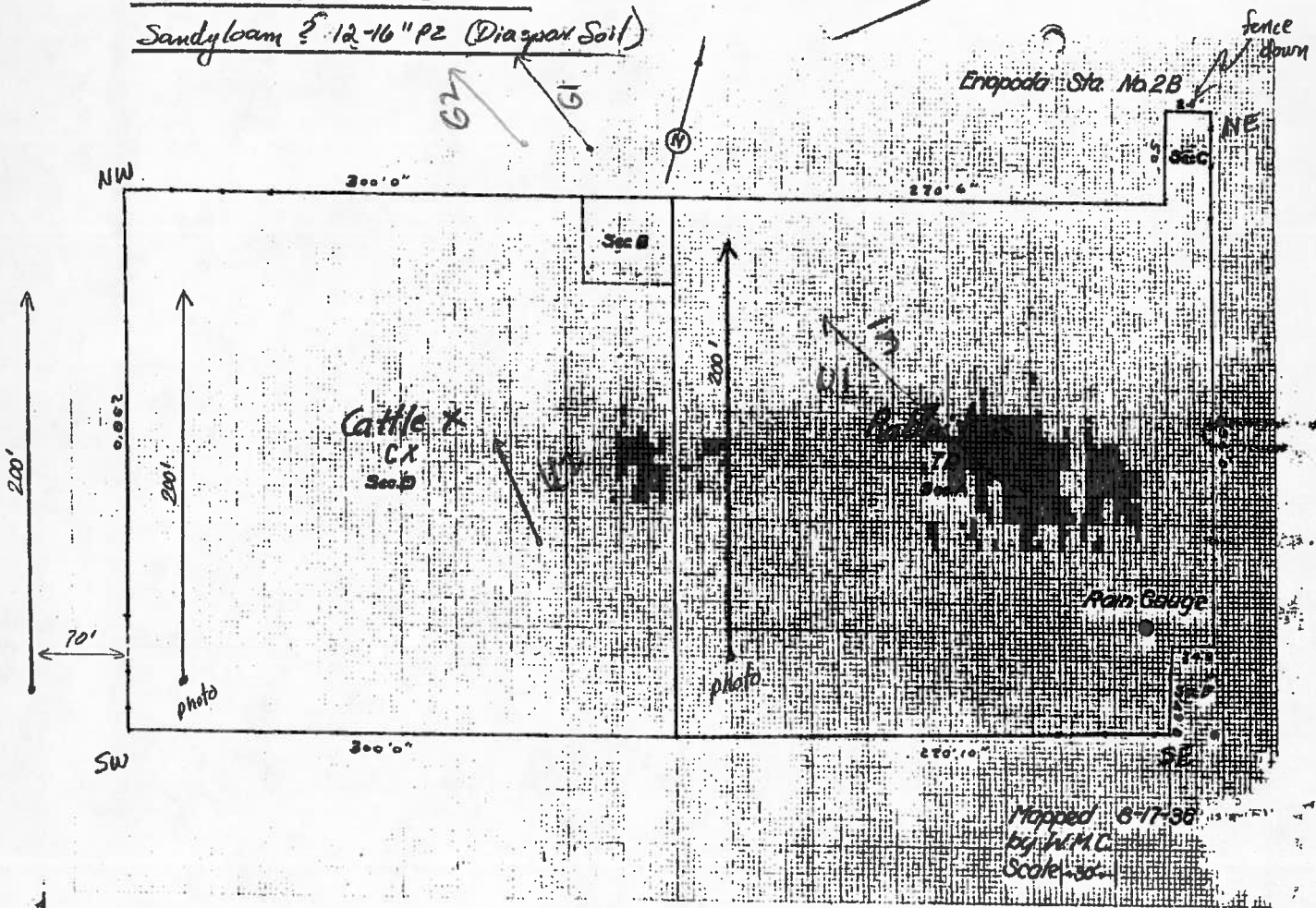


SRER Enclosure #1A  
 Sandyloam, deep 12-16" Pz (Combate soil)  
 Sandyloam? 12-16" Pz (Diaspar soil)  
 Sandyloam Upland 12-16" Pz (Baboquivari soil!)

Mapped 8-20-36  
 by W.M.C.  
 Scale 1-50'

SRER Exlosure #2B

Sandy loam ? 12-16" PZ (Diagnon Soil)



Enopoda Sta. No 2B

fence down

NE

Sec B

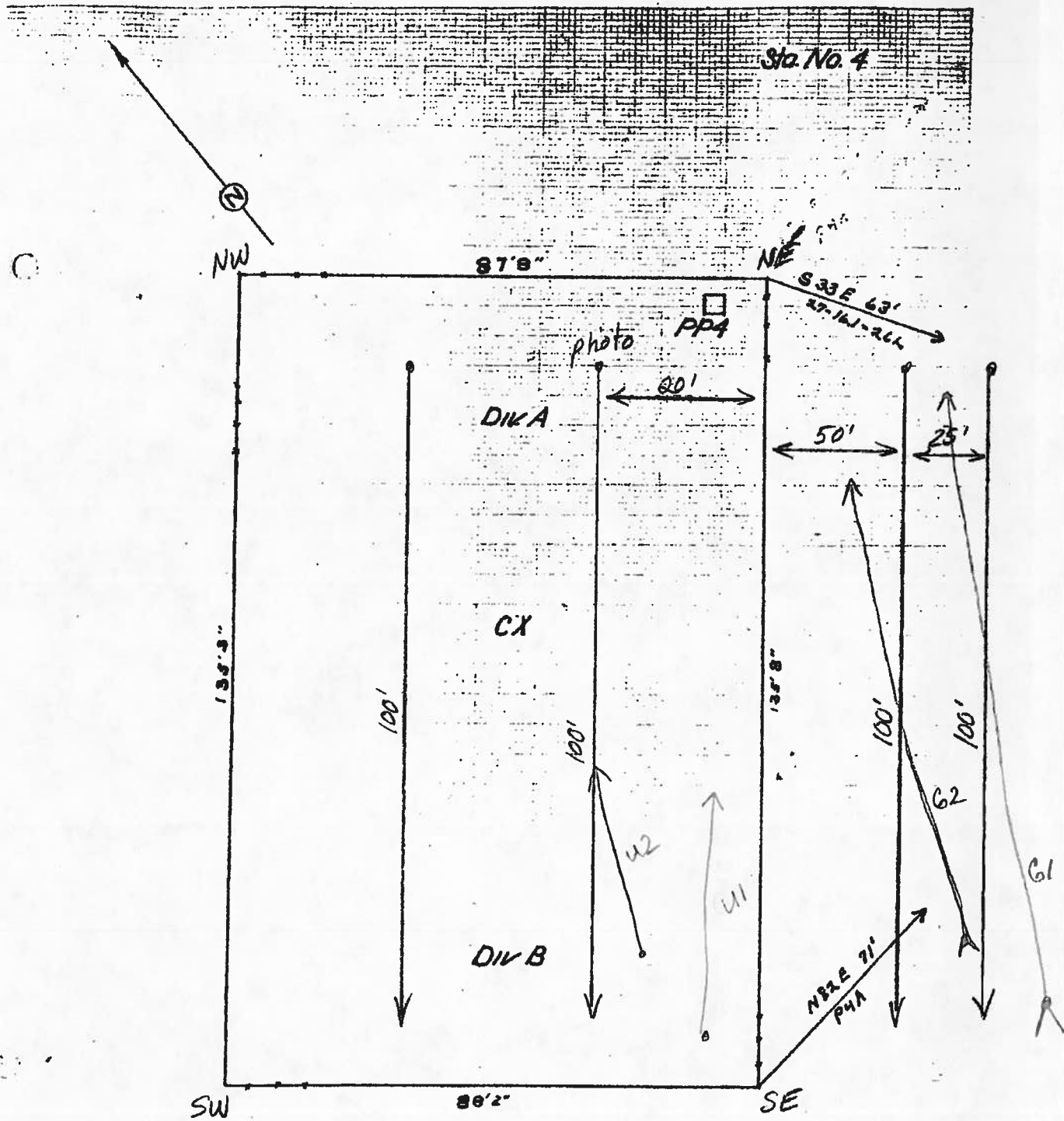
Cattle X  
CX  
Sec B

Rain Gauge

SE

Mapped 6-17-38  
by W.M.C.  
Scale 50'

SW



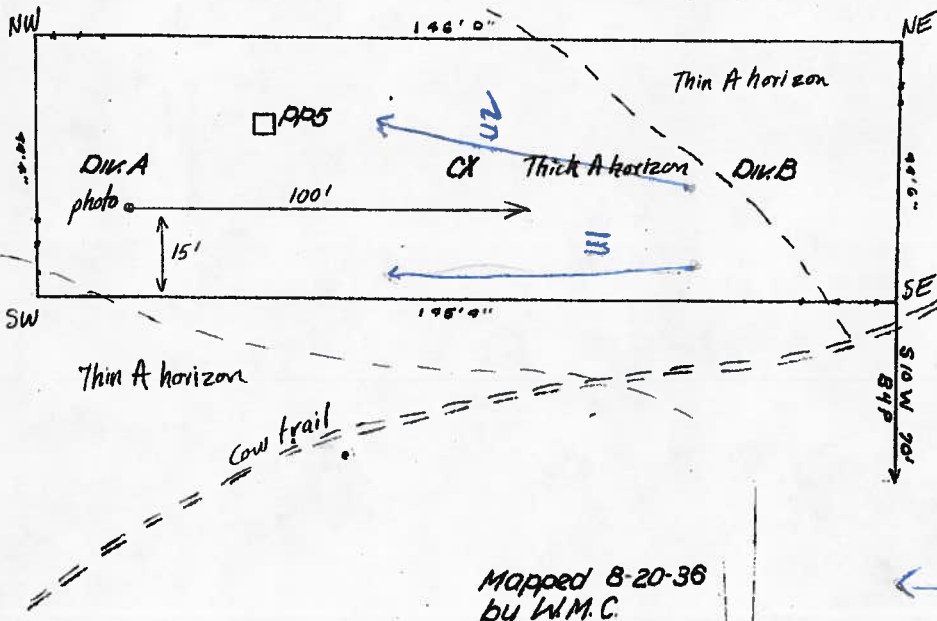
SRER Enclosure # 4  
Sandy loam ? 12-16" PZ (Diaspor soil)

Mapped 8-20-36  
 by W.M.C.  
 Scale 10-1

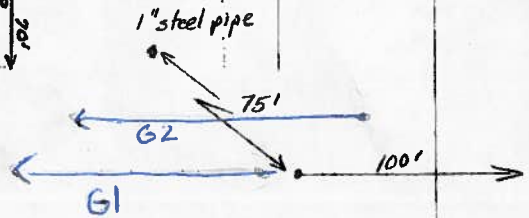
Sta. No. 5

SRER Enclosure #5

Sandy loam Upland 12-16" PE (Sasabe soil)



Mapped 8-20-36  
by W.M.C.  
Scale 1/4" = 10'



Sta No. 6

PASTURE 2 PASTURE 6A



NW 62' 5" NE

DIV. B

PHOTO

02

75'

G2

PASTURE 2

200'

200'

PASTURE 6A

SRER Enclosure # 6

Sandy loam Upland 12-16" PZ

Baboquivari soil

201' 0"

208' 0"

ADG

U1

G1

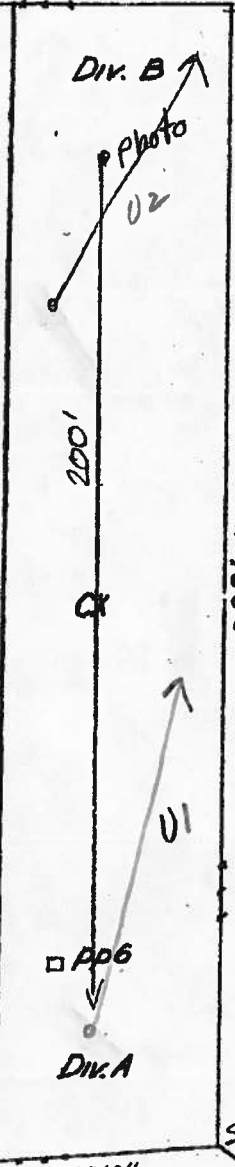
DIV. A

N 74 W 145'  
P6B

SW 63' 0"

SE S 57 E 70'  
P6A

Mapped 8-19-36  
by W.M.C.  
Scale 20'

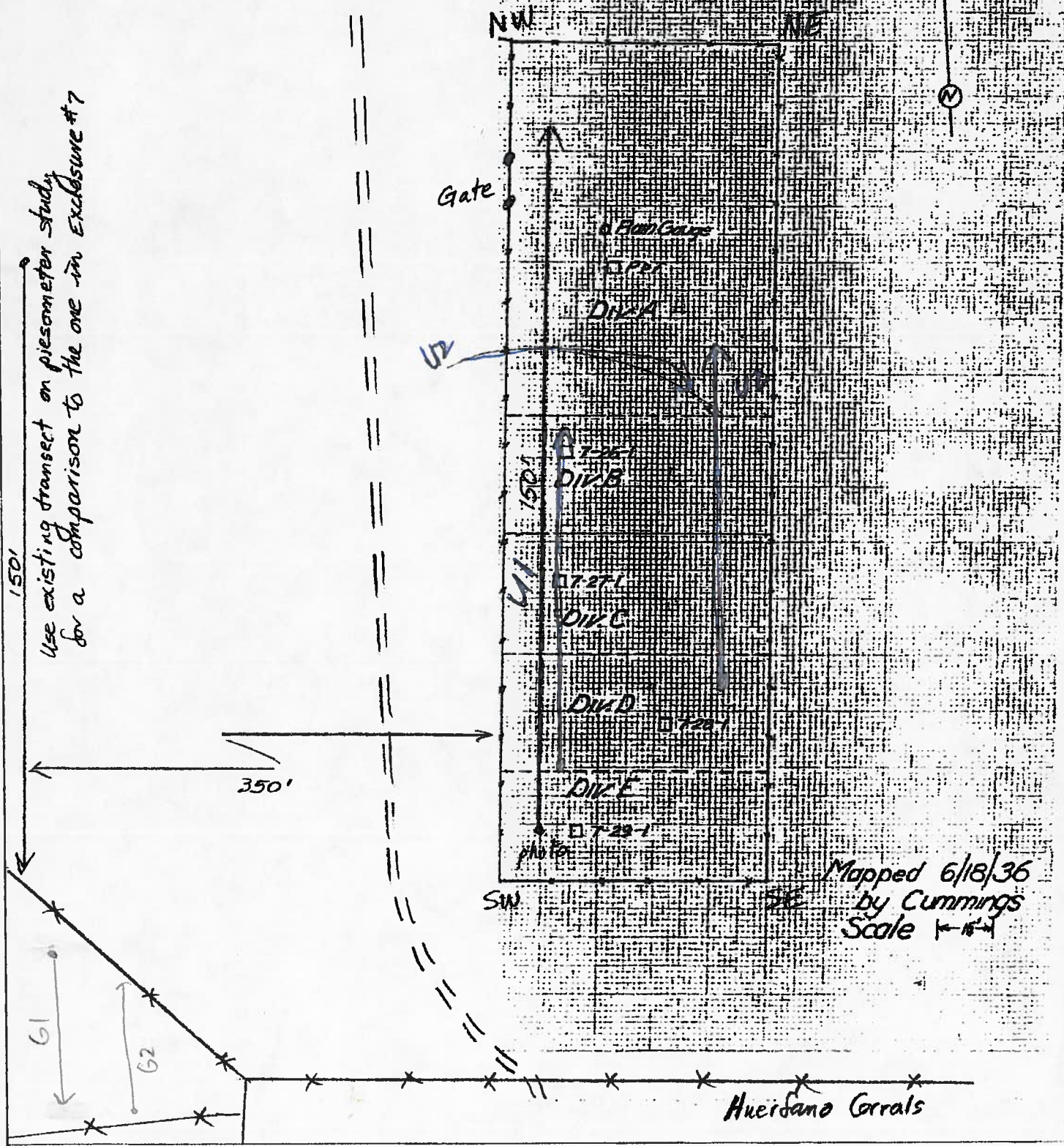




SRER Enclosure 7  
 Sandyloam Upland 12-16" PZ (Diaspor soil)

Huerfano Sta No 7

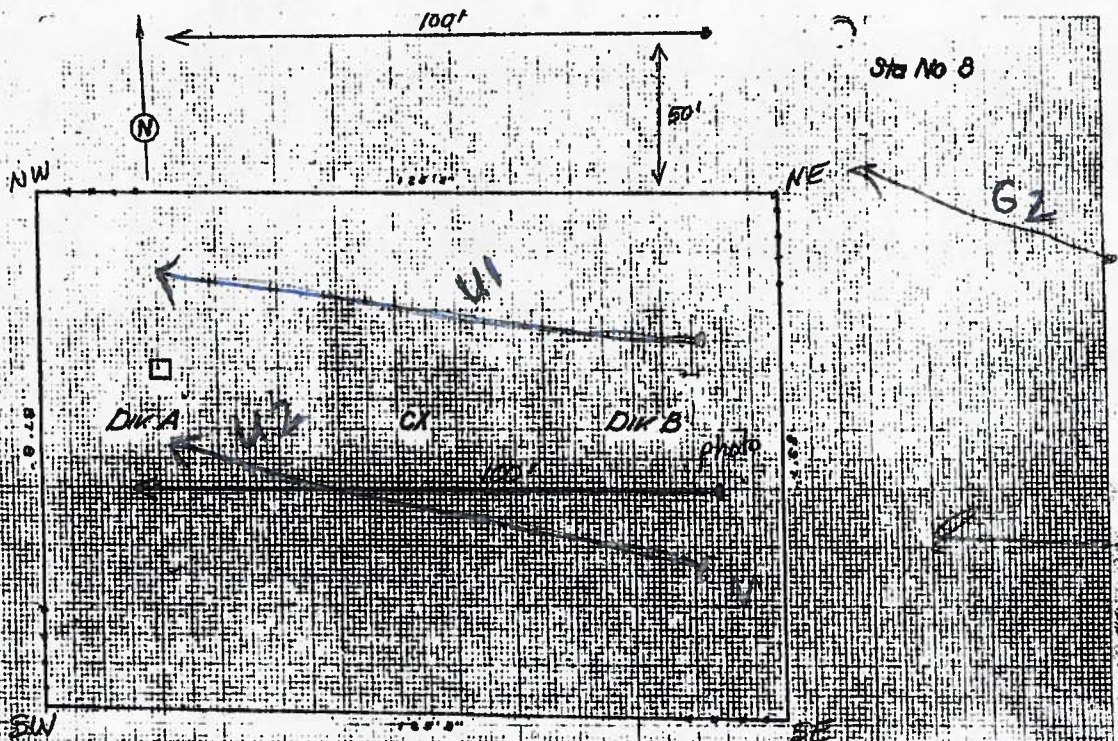
Use existing transect on piezometer study  
 for a comparison to the one in Enclosure #7



Mapped 6/18/36  
 by Cummings  
 Scale 1" = 100'

Huerfano Corral



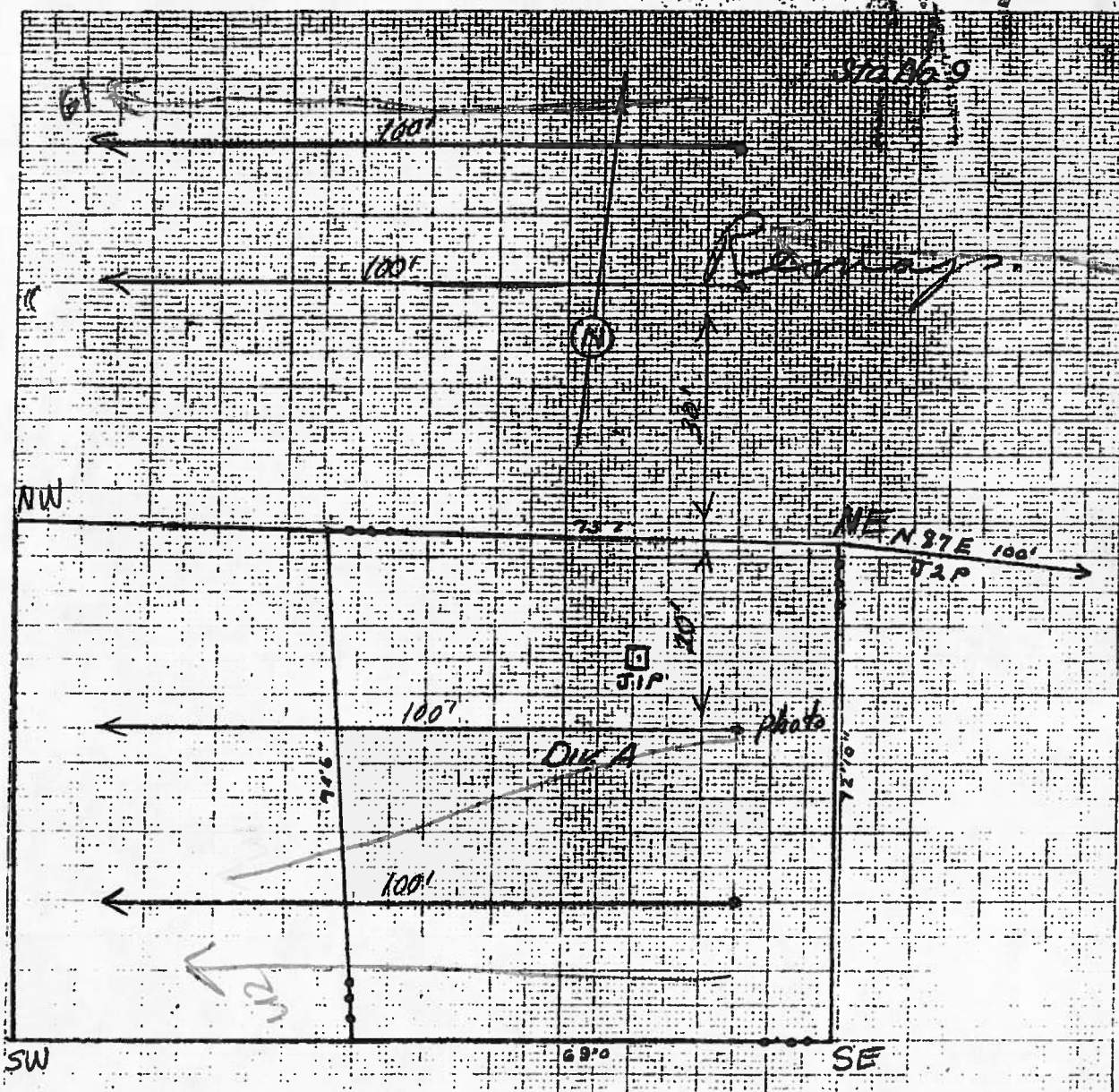


SRER Enclosure #8

Sandy loam, deep 12-16" (combat soil)

Mapped 8-19-58  
by WMC  
Scale 1" = 10'

61



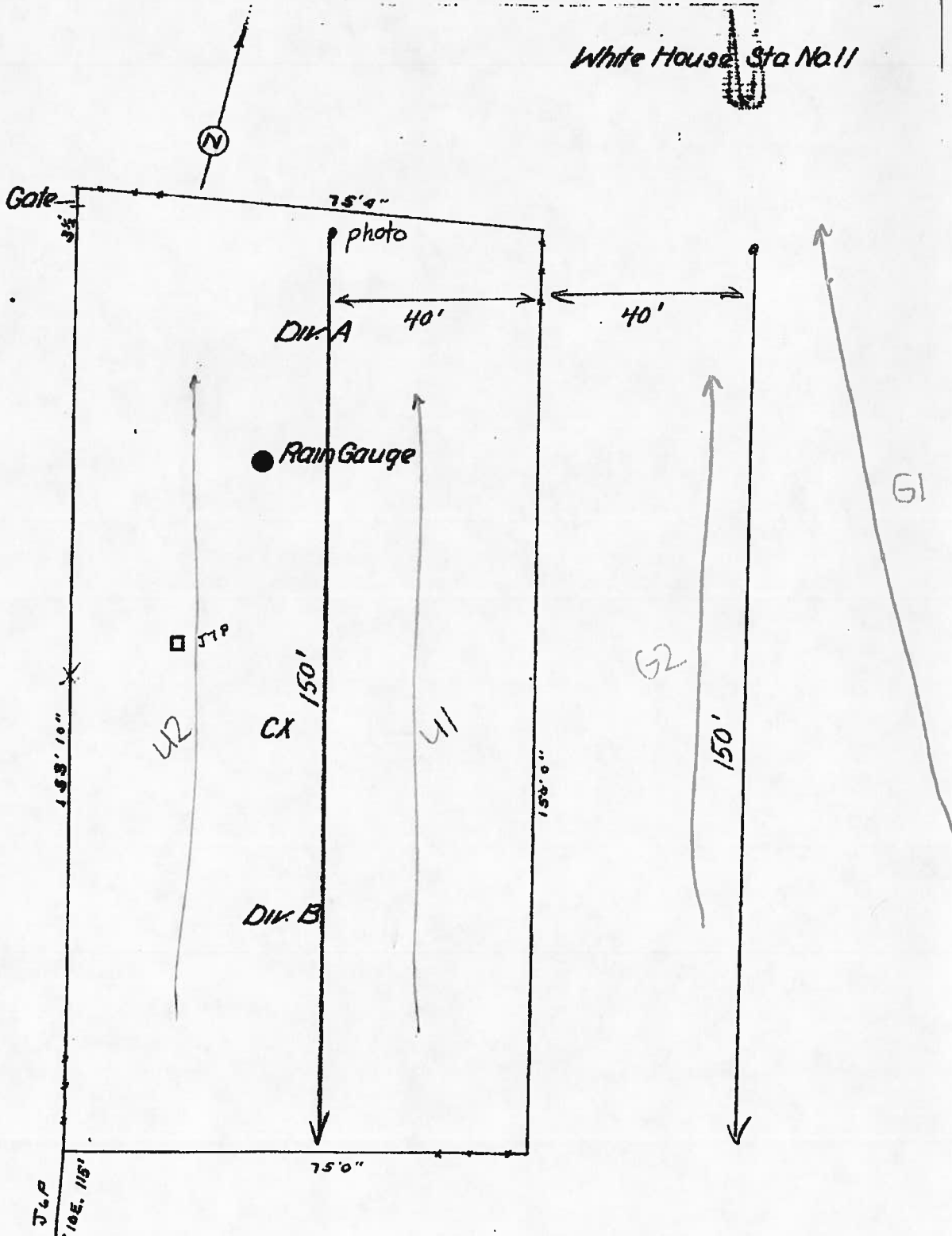
SRER Enclosure #9  
 Loamy Upland 12-16" PZ (Etoma soil)

Mapped 8-27-36  
 by W.M.C.  
 Scale 1:100

H. W. W. S. J. N. Y. R. V.



White House Sta No 11

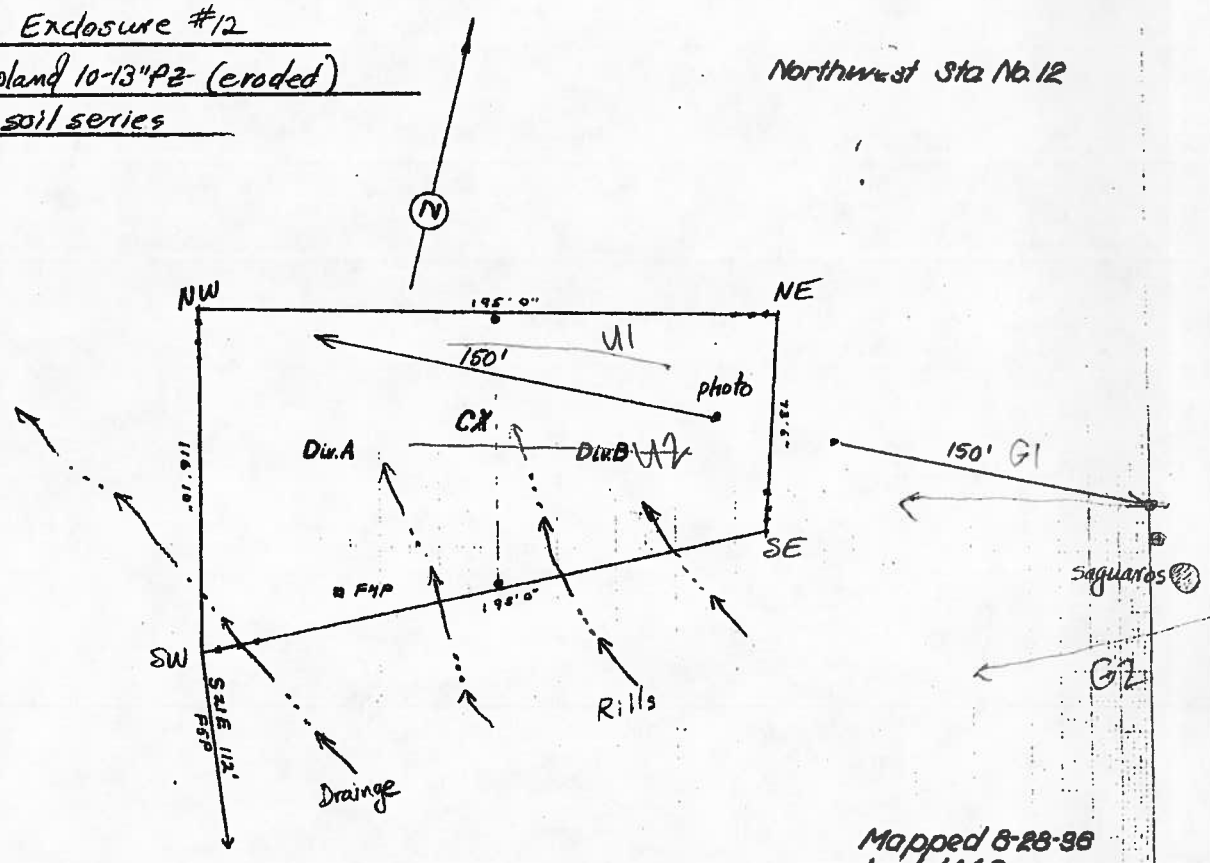


SRER Enclosure #11  
Loamy Upland 12-16" Pz (Whitehouse soil)

Mapped 8-20-36  
 by W.M.C.  
 Scale 1"=10'

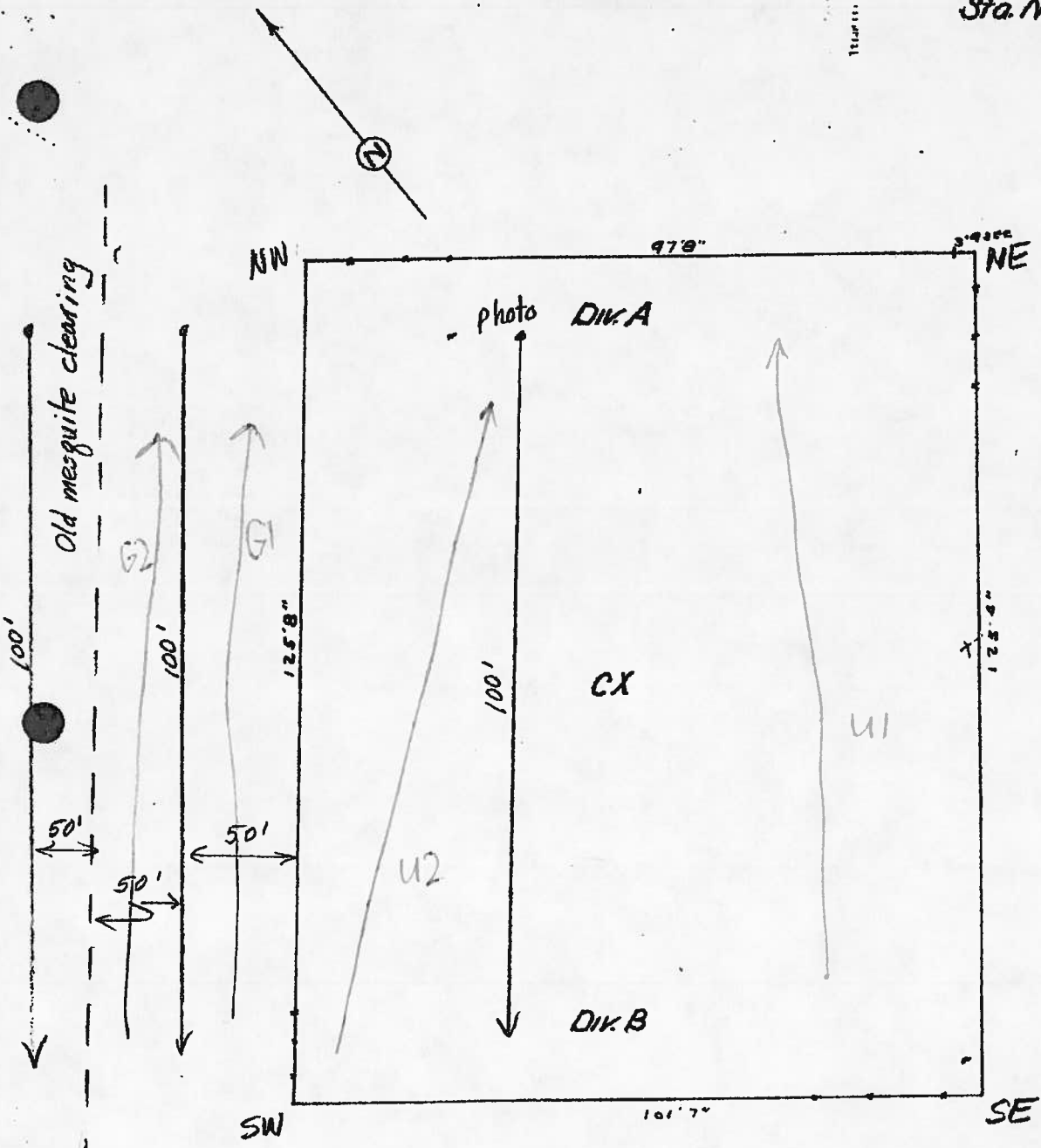
SRER Enclosure #12  
Sandyloam Upland 10-13" P2 (eroded)  
Tubac soil series

Northwest Sta No. 12



Mapped 8-28-36  
by W.M.C.  
Scale 20'

Sta. No. 13



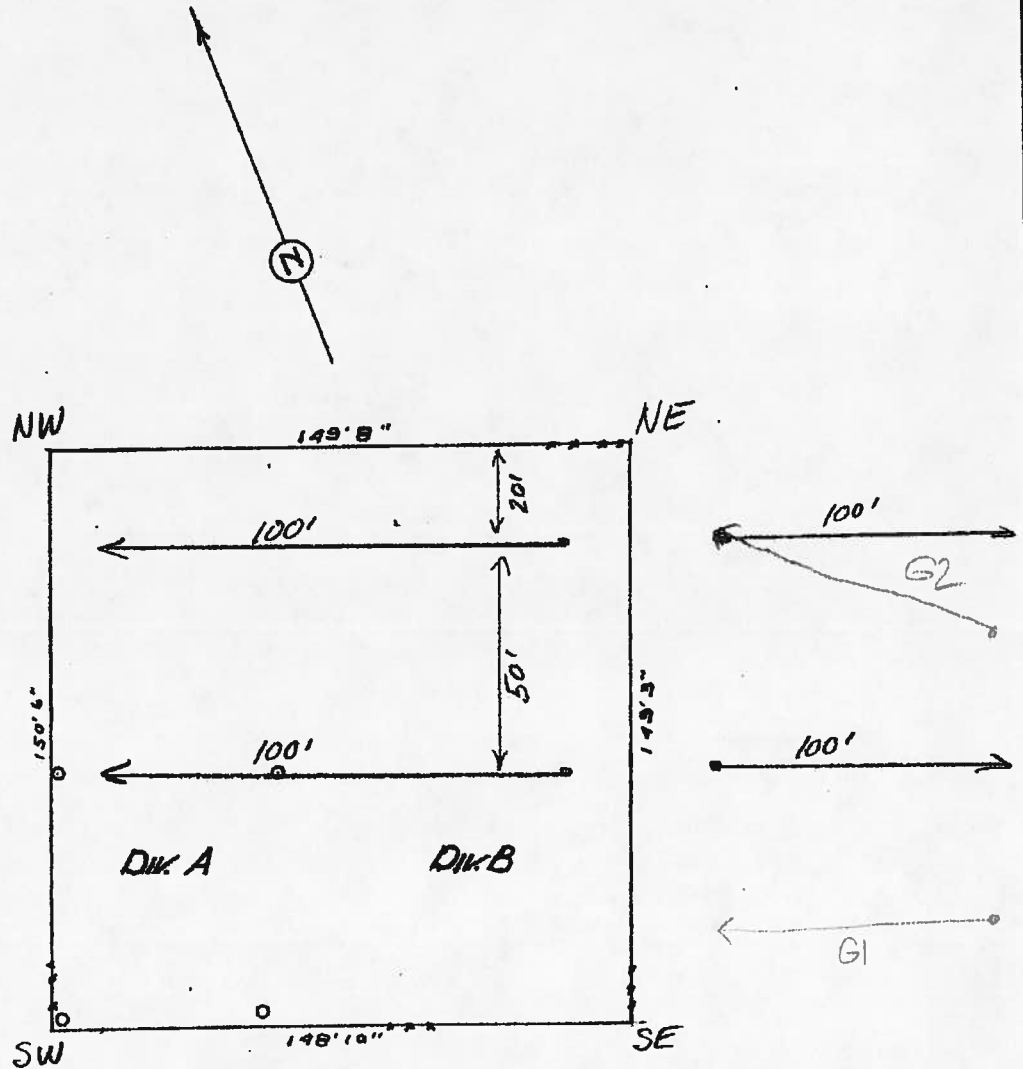
SPER Enclosure #13

Loamy Upland 16-20" PZ (Ferrarosa soil)

Mapped 8-20-36  
by W.M.C.  
Scale 1/10

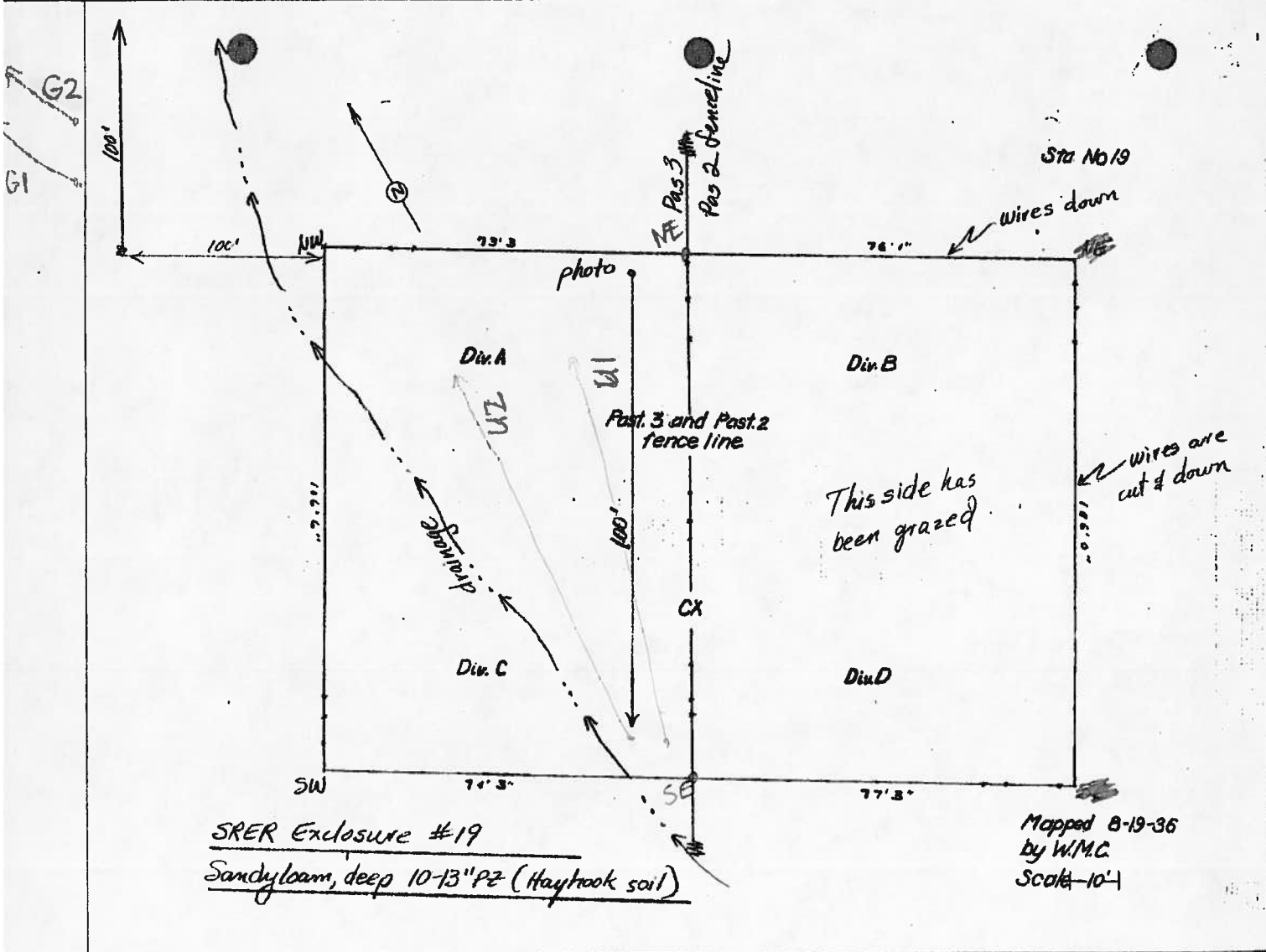


Sta. No 15



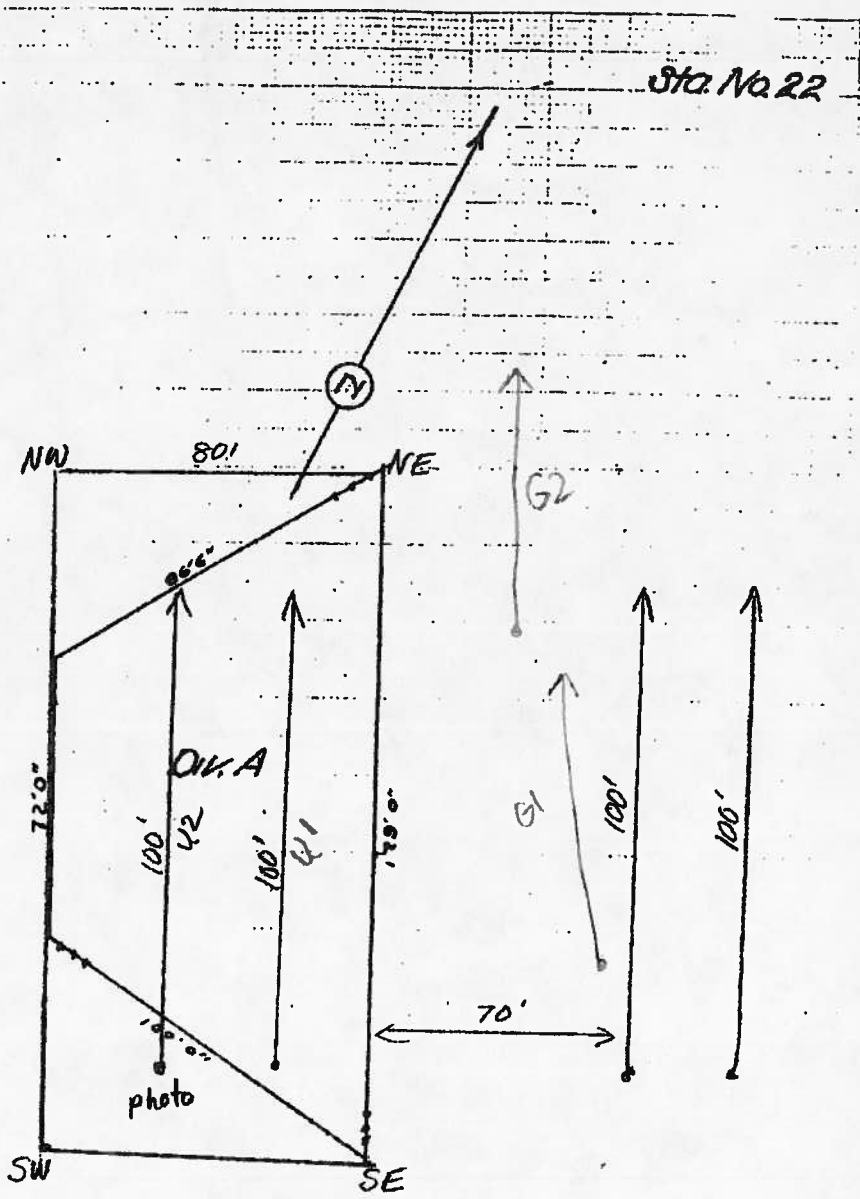
SRER Exclosure #15  
Loamy Upland 12-16" Pz (Whitehouse soil)

Mapped 8-27-36  
by W.M.C  
Scale 1/20-1



SRER Enclosure #19  
Sandy loam, deep 10-13" Pz (Haybrook soil)

Mapped 8-19-36  
 by W.M.C.  
 Scale 10'-1

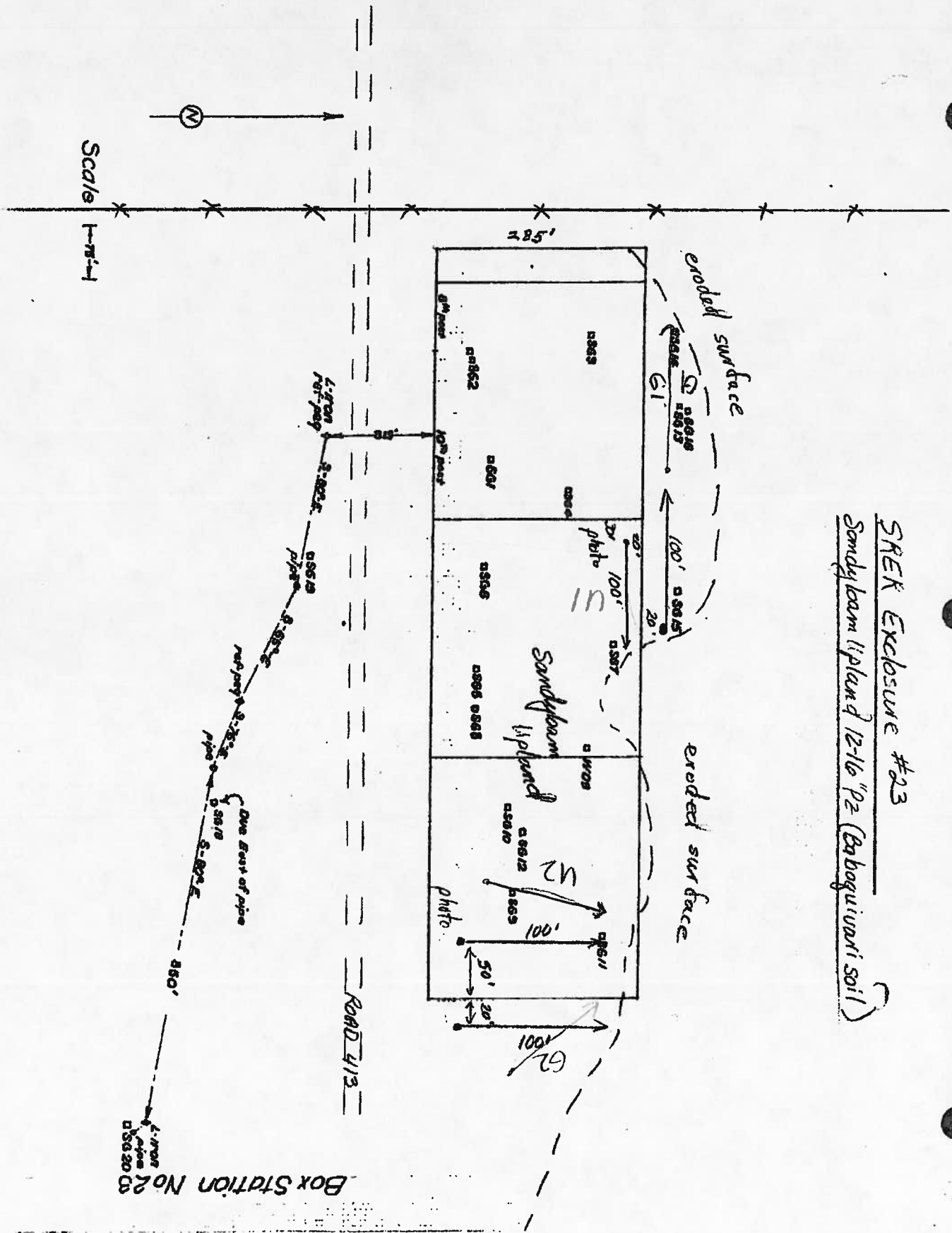


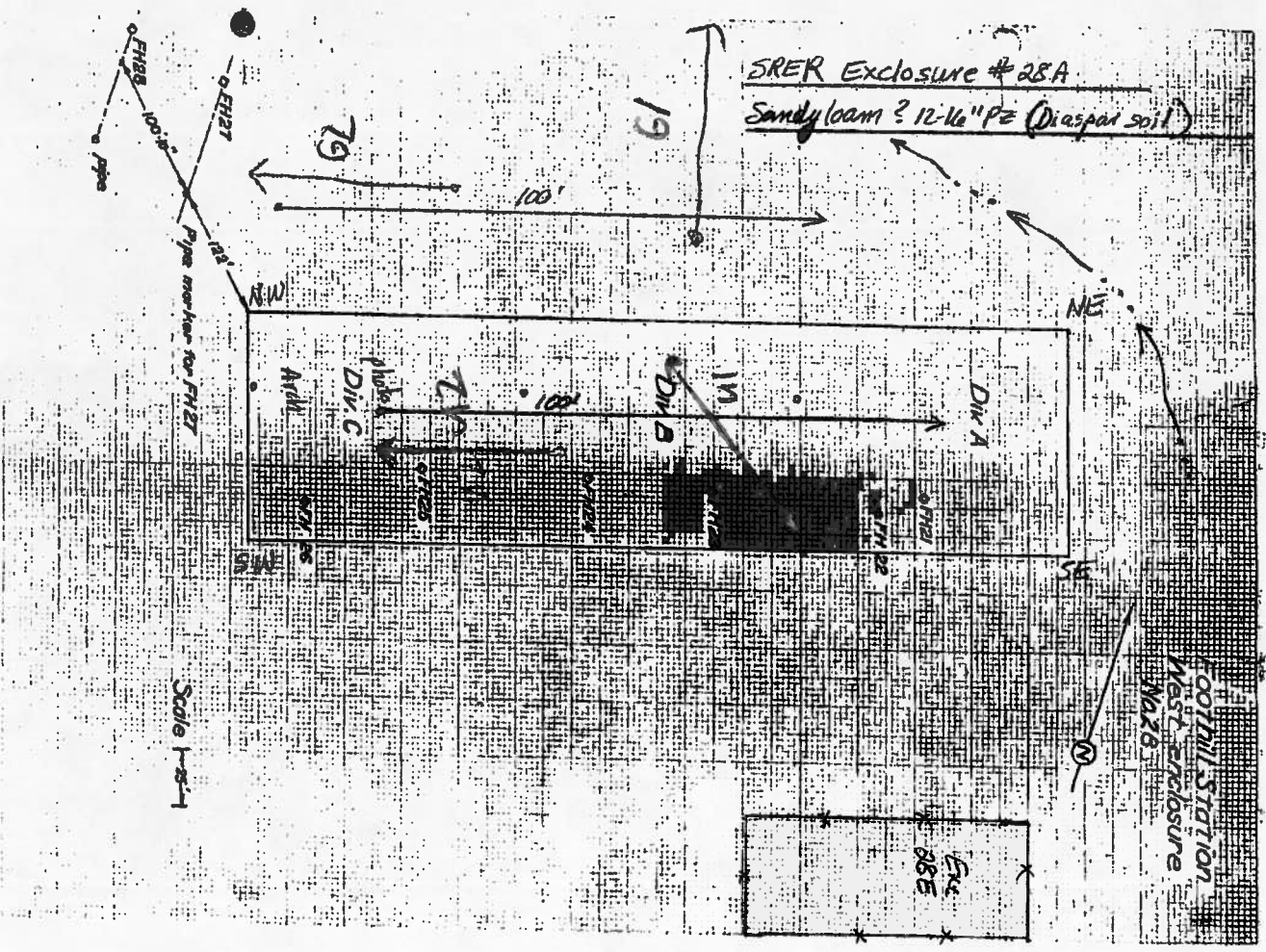
SRER Enclosure 22  
Sandy loam, deep 12-16" Pz (combat soil)

Mapped 8-27-36  
 by W.M.C.  
 Scale 1/204



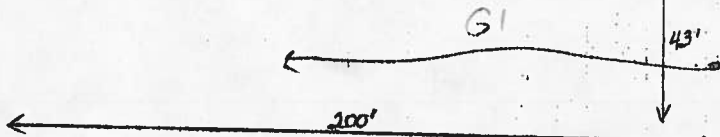
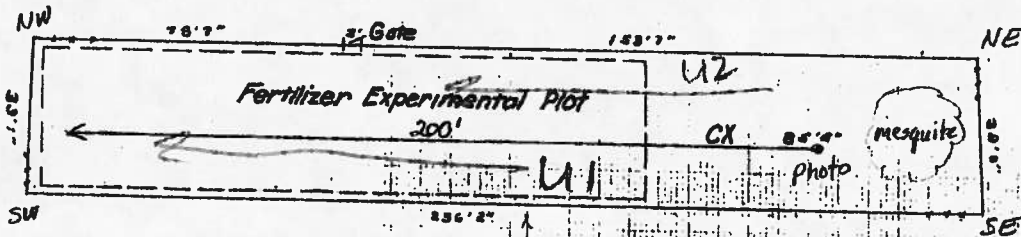
SREK Enclosure #23  
Sandy loam (ipland 12-16 "P2 (Babaguiuari soil)



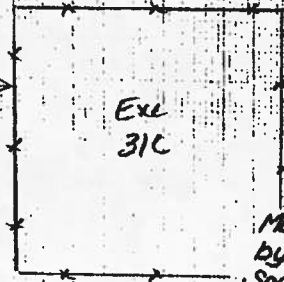


Parlier Sta No. 31, Div. D

SRER Enclosure 31D  
Sandy loam, deep 16-20" pZ (Langue soil)



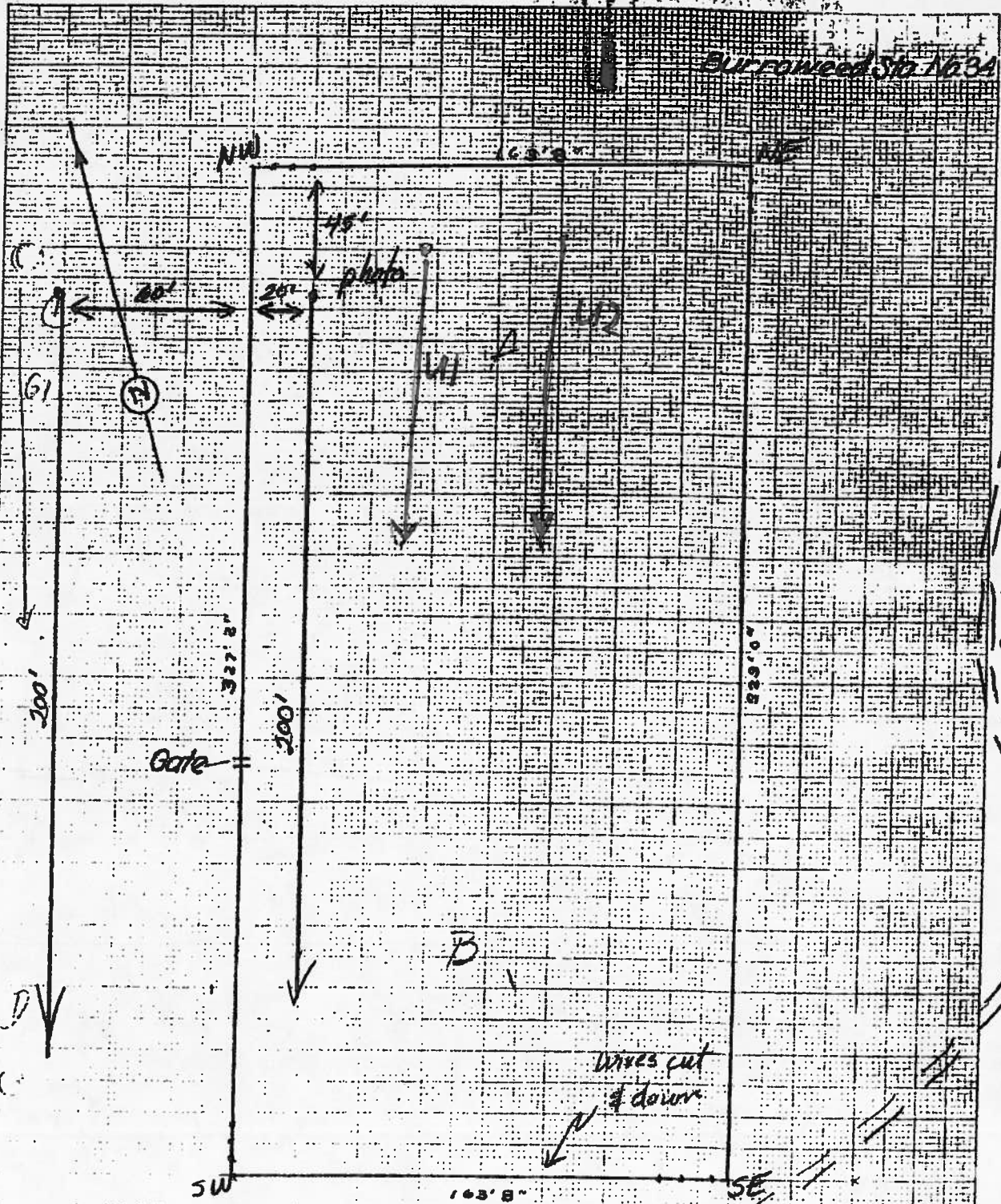
G2



Mapped 8-18-36  
by W.M.C.  
Scale 1/15'



Burford St 163A



SRER Enclosure # 34A

Sandy loam Upland 12-16" Pz (Diaspor soil)

Mapped 8-31-30  
by L.M.C.  
Scale 1:200

U.S. Wild. Serv. S.A. 1001 (1-1-30)

62

61

60

200'

200'

Gate

327.5'

229.0'

163.5'

163.5'

Road

Wires cut & down

NW

NE

SW

SE

C

C

B

45'

20'

20'

41

42

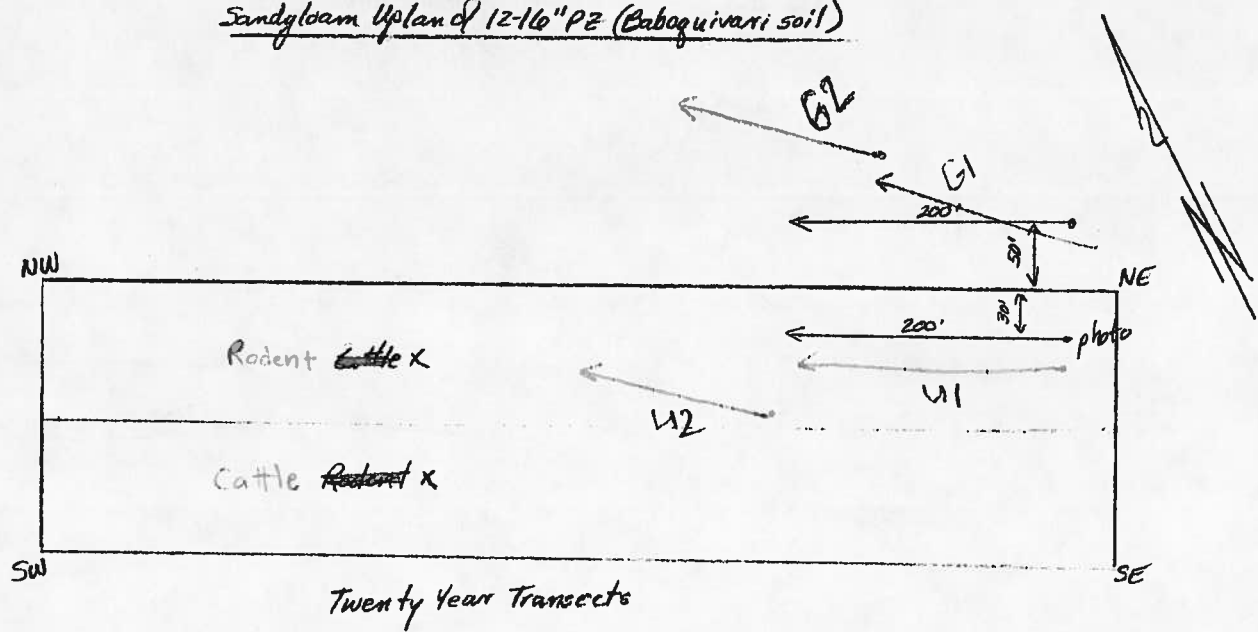
4

D

C

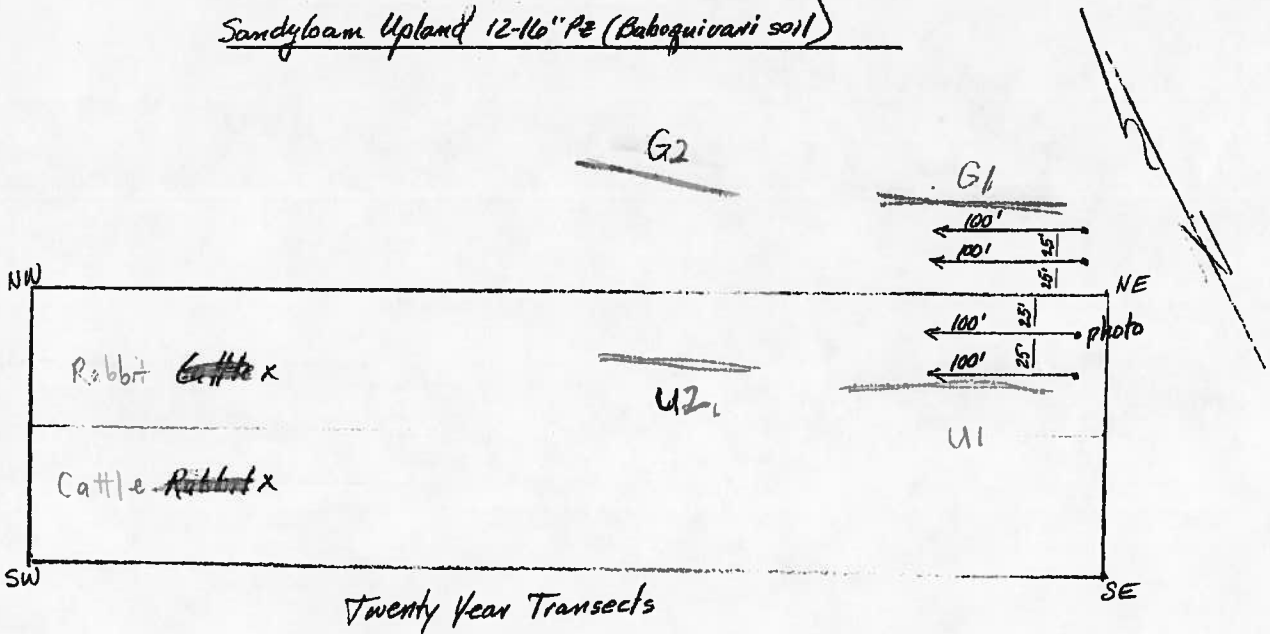
E

SRER Enclosure 35A  
Sandyloam Upland of 12-16" PZ (Baboquivari soil)




0 100' 200'  
D. Robine #, L. Kennedy  
3-12-09

SRER Enclosure 35B  
Sandyloam Upland 12-16" Pz (Baboquivari soil)

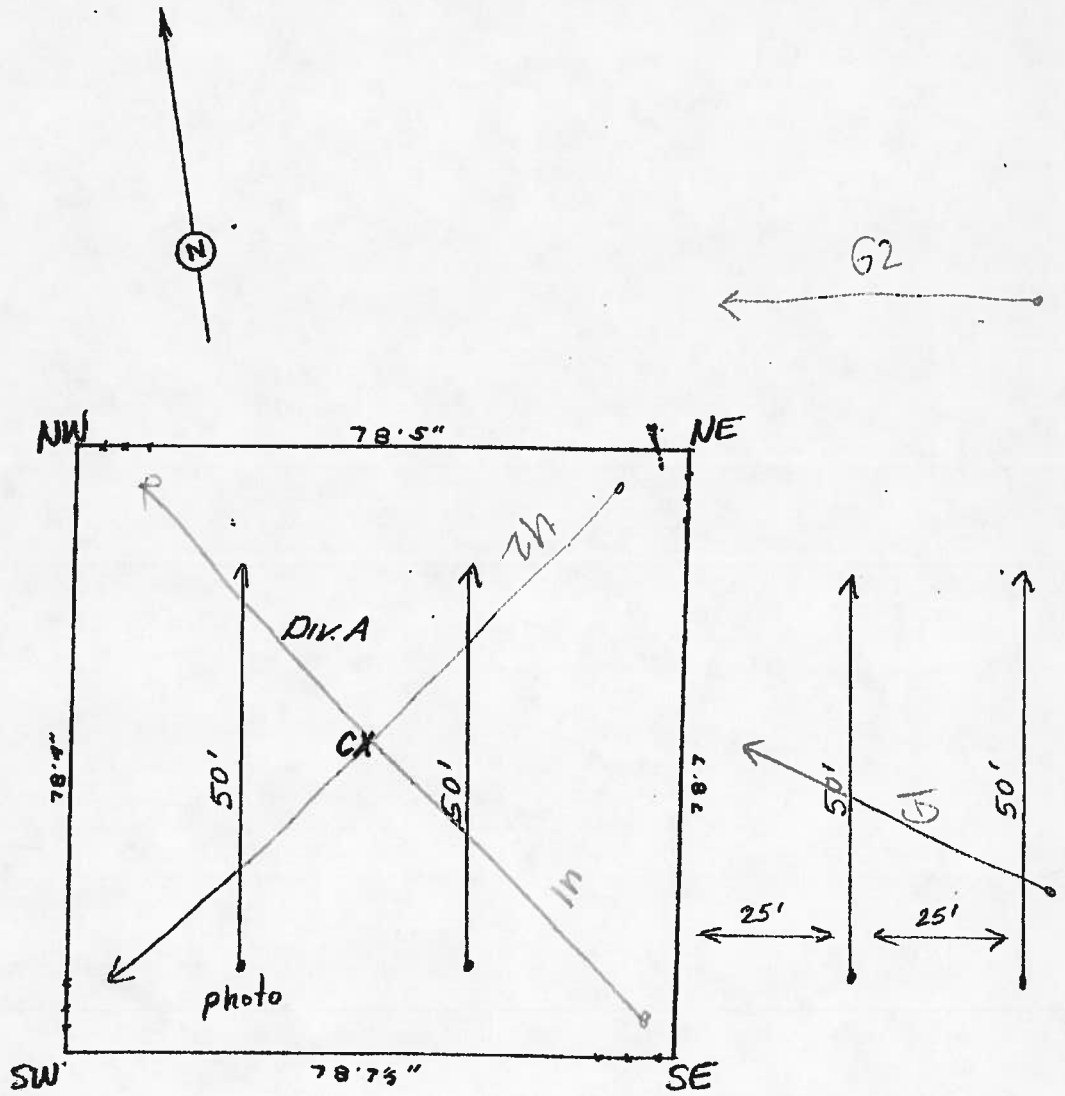


0 100' 200'  
 D. Robinett, L. Kennedy  
 3-12-09

3" steel pipe  
 510726  
 3517624 0  
  
 4 *Pentstemon incana*  
 plants removed



Sta No 40

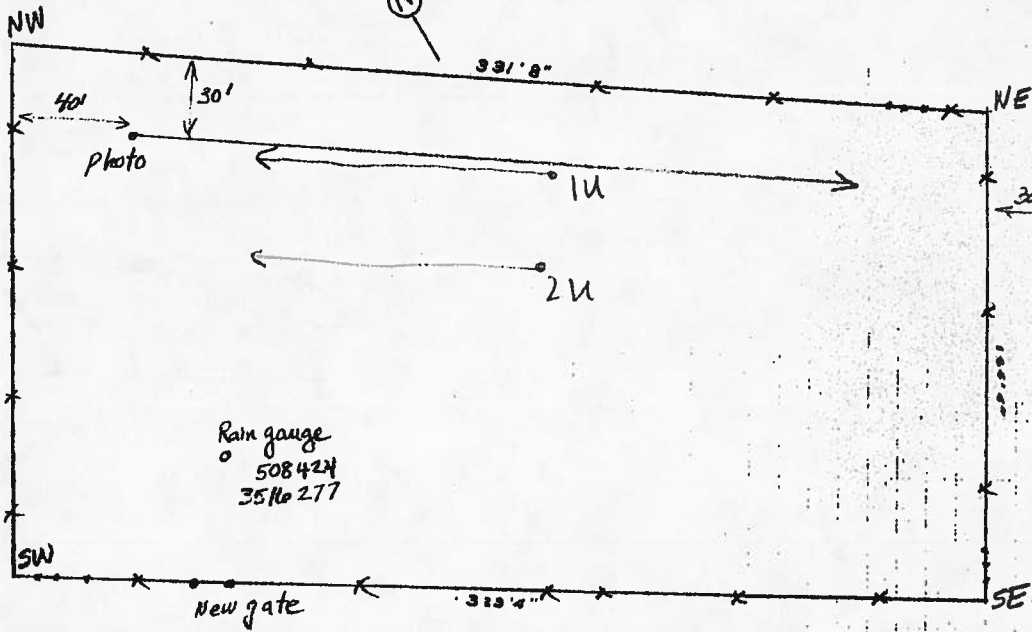


SRER Enclosure #40

Sandy loam ? 12-16" pz (Diaspor soil)

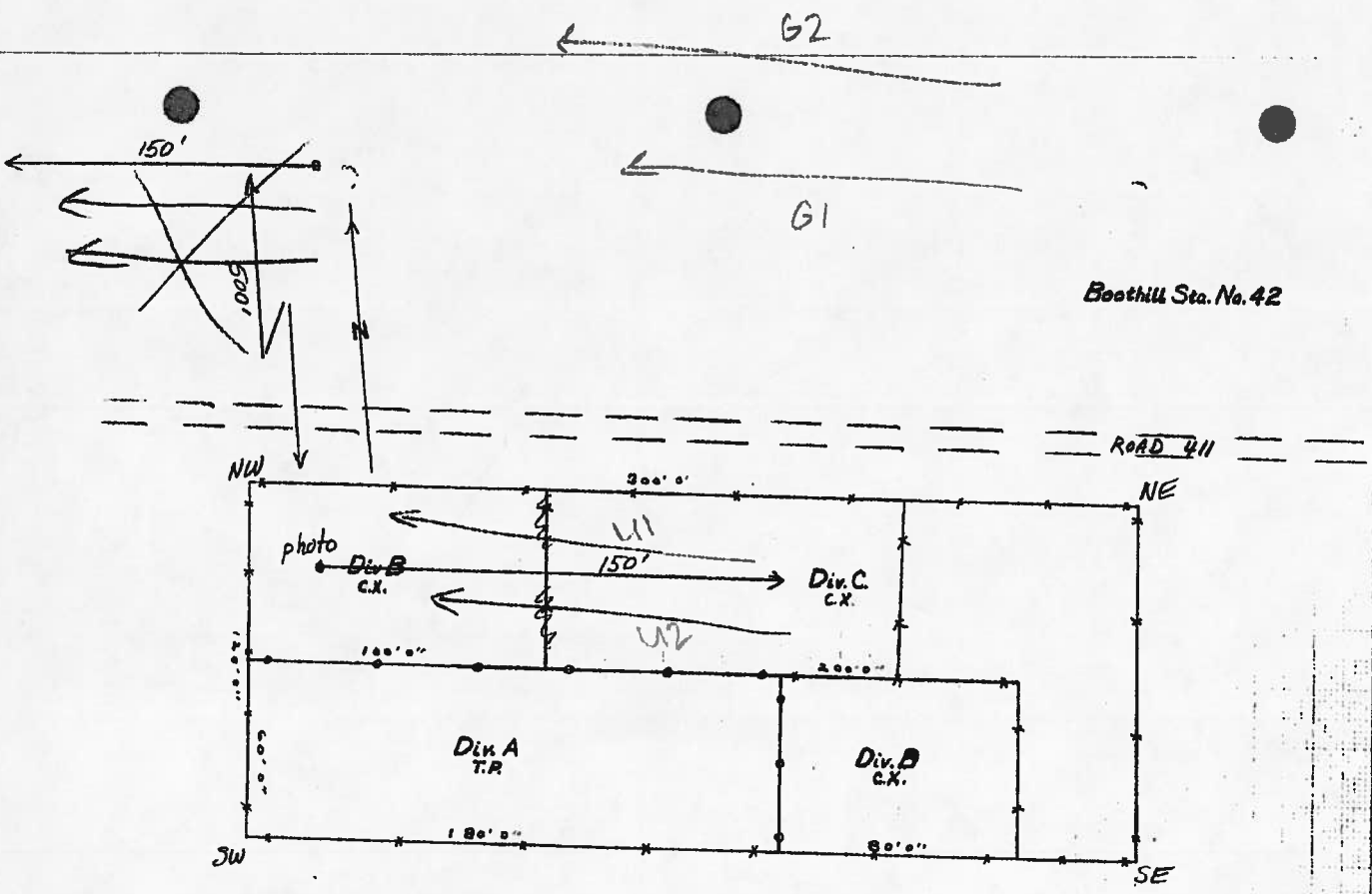
Mapped 8-19-36  
by W.M.G.  
Scale 10'

SRER Enclosure # 41  
Loamy Upland 12-16" Pz (Whitehouse Soil) Sta. No 41



ROAD 406

Mapped 8-28-36  
by W.M.C.  
Scale 1:2000



SRER Enclosure #42  
Sandy loam Upland 12-16" PZ (Diaspar soil)

Mapped  
 by W.J.C.

Scale 1" = 20'